

**DATASHEET**

**ERCC2 Rabbit Polyclonal Antibody**

CAT. NO. APA14465

**KEY FEATURES**

Target	ERCC2	Source / Host	Rabbit
Reactivity	Human	Clonality	Polyclonal
Applications	WB, IF/ICC	Conjugation	Unconjugated
Form / Buffer	Liquid in 0.42% Potassium phosphate, 0.87% Sodium chloride, pH 7.3, 30% glycerol, and 0.01% sodium azide.		Storage at-20°C

**BACKGROUND**

ATP-dependent 5'-3' DNA helicase . Component of the general transcription and DNA repair factor IIF (TFIIH) core complex, not absolutely essential for minimal transcription in vitro . Required for transcription-coupled nucleotide excision repair (NER) of damaged DNA; recognizes damaged bases . Sequestered in chromatin on UV-damaged DNA . When complexed to CDK-activating kinase (CAK), involved in transcription by RNA polymerase II. In NER, TFIIH acts by opening DNA around the lesion to allow the excision of the damaged oligonucleotide and its replacement by a new DNA fragment. The ATP-dependent helicase activity of XPD/ERCC2 is required for DNA opening. Involved in DNA lesion verification . In transcription, TFIIH has an essential role in transcription initiation.

**APPLICATION**

To ensure optimal assay performance, AREX recommends conducting reagent titration tailored to each testing system for optimal detection results.

WB	1:500 - 1:2000
IF/ICC	1:50 - 1:200

\*Results are sample-specific. Please refer to your local assay conditions and test parameters for reference.

**PRODUCT OVERVIEW**

Description	Rabbit polyclonal antibody to ERCC2
Specificity	Recognizes endogenous levels of ERCC2 protein.
Antibody Type	Primary antibody
Immunogen	Recombinant fusion protein of human ERCC2
Purification	The antibody was purified by immunogen affinity chromatography.
Molecular Weight	Predicted: 46; Observed: 87 kD
Form/Buffer	Liquid in 0.42% Potassium phosphate, 0.87% Sodium chloride, pH 7.3, 30% glycerol, and 0.01% sodium azide.
Alternative Names	XPD; XPDC; TFIIH basal transcription factor complex helicase XPD subunit; Basic transcription factor 2 80 kDa subunit; BTF2 p80; CXPB; DNA excision repair protein ERCC-2; DNA repair protein complementing XP-D cells; TFIIH basal transcription factor complex 80 kDa subunit; TFIIH 80 kDa subunit; TFIIH p80; Xeroderma pigmentosum group D-complementing protein
Gene Symbol	ERCC2
Entrez Gene	2068(Human)
SwissProt	P18074(Human)

\*AREX continuously optimizes our products. Webpage content may not reflect the latest updates. For inquiries, please contact [info@arexbio.com](mailto:info@arexbio.com) or your local distributor.

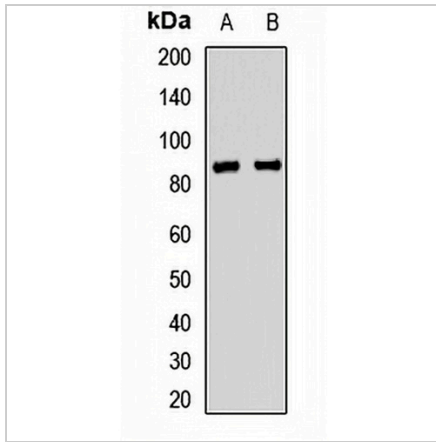
\*Clone Number, Reactivity, Source/Host and Clonality can be found in the product name and Key Features section above.

**DATASHEET**

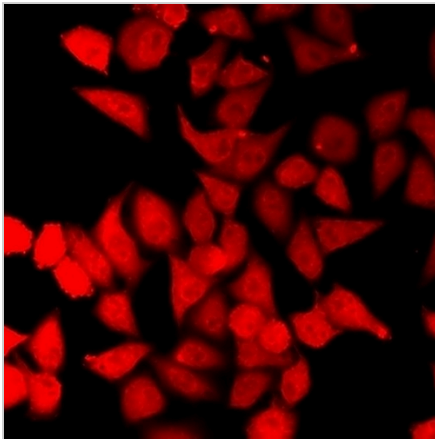
**ERCC2 Rabbit Polyclonal Antibody**

CAT. NO. APA14465

**DATA**



Western blot analysis of ERCC2 expression in THP1 (A), HepG2 (B) whole cell lysates. (Predicted band size: 46; 86 kD; Observed band size: 87 kD)



Immunofluorescent analysis of ERCC2 staining in HeLa cells. Formalin-fixed cells were permeabilized with 0.1% Triton X-100 in TBS for 5-10 minutes and blocked with 3% BSA-PBS for 30 minutes at room temperature. Cells were probed with the primary antibody in 3% BSA-PBS and incubated overnight at 4 °C in a humidified chamber. Cells were washed with PBST and incubated with a DyLight 594-conjugated secondary antibody (red) in PBS at room temperature in the dark.

**STORAGE**

Store at 4°C short term. For long term storage, store at -20°C, avoiding freeze/thaw cycles.

**NOTE**

For Research Use Only. Not for diagnostic, therapeutics, prophylactic or in vivo use.