

**DATASHEET**

**CDX1 Rabbit Polyclonal Antibody**

CAT. NO. APA14469

**KEY FEATURES**

Target	CDX1	Source / Host	Rabbit
Reactivity	Human, Mouse, Rat	Clonality	Polyclonal
Applications	WB	Conjugation	Unconjugated
Form / Buffer	Liquid in 0.42% Potassium phosphate, 0.87% Sodium chloride, pH 7.3, 30% glycerol, and 0.01% sodium azide.		Storage at-20°C

**BACKGROUND**

Plays a role in transcriptional regulation . Involved in activated KRAS-mediated transcriptional activation of PRKD1 in colorectal cancer (CRC) cells . Binds to the PRKD1 promoter in colorectal cancer (CRC) cells . Could play a role in the terminal differentiation of the intestine. Binds preferentially to methylated DNA .

**APPLICATION**

To ensure optimal assay performance, AREX recommends conducting reagent titration tailored to each testing system for optimal detection results.

WB	1:500 - 1:1000
----	----------------

\*Results are sample-specific. Please refer to your local assay conditions and test parameters for reference.

**PRODUCT OVERVIEW**

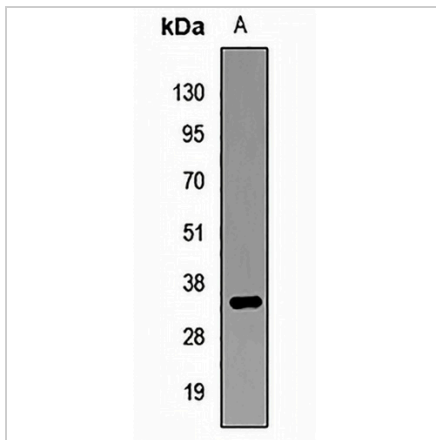
Description	Rabbit polyclonal antibody to CDX1
Specificity	Recognizes endogenous levels of CDX1 protein.
Antibody Type	Primary antibody
Immunogen	Recombinant fusion protein of human CDX1
Purification	The antibody was purified by immunogen affinity chromatography.
Molecular Weight	Predicted: 14; Observed: 35 kD
Form/Buffer	Liquid in 0.42% Potassium phosphate, 0.87% Sodium chloride, pH 7.3, 30% glycerol, and 0.01% sodium azide.
Alternative Names	Homeobox protein CDX-1; Caudal-type homeobox protein 1
Gene Symbol	CDX1
Entrez Gene	1044(Human); 12590(Mouse)
SwissProt	P47902(Human); P18111(Mouse); Q05095(Rat)

\*AREX continuously optimizes our products. Webpage content may not reflect the latest updates. For inquiries, please contact [info@arexbio.com](mailto:info@arexbio.com) or your local distributor.

\*Clone Number, Reactivity, Source/Host and Clonality can be found in the product name and Key Features section above.

**DATASHEET****CDX1 Rabbit Polyclonal Antibody**

CAT. NO. APA14469

**DATA**

Western blot analysis of CDX1 expression in Hela (A) whole cell lysates. (Predicted band size: 14; 28 kD; Observed band size: 35 kD)

**STORAGE**

Store at 4°C short term. For long term storage, store at -20°C, avoiding freeze/thaw cycles.

**NOTE**

For Research Use Only. Not for diagnostic, therapeutics, prophylactic or in vivo use.