

DATASHEET

MAP1 Rabbit Polyclonal Antibody

CAT. NO. APA14471

KEY FEATURES

Target	MAP1	Source / Host	Rabbit
Reactivity	Human, Mouse, Rat	Clonality	Polyclonal
Applications	WB	Conjugation	Unconjugated
Form / Buffer	Liquid in 0.42% Potassium phosphate, 0.87% Sodium chloride, pH 7.3, 30% glycerol, and 0.01% sodium azide.		Storage at -20°C

BACKGROUND

Retrotransposon-derived protein that forms virion-like capsids . Acts as an effector of BAX during apoptosis: enriched at outer mitochondria membrane and associates with BAX upon induction of apoptosis, facilitating BAX-dependent mitochondrial outer membrane permeabilization and apoptosis . Required for death receptor-dependent apoptosis . When associated with RASSF1, promotes BAX conformational change and translocation to mitochondrial membranes in response to TNF and TNFSF10 stimulation . Also promotes autophagy: promotes phagophore closure via association with ATG8 proteins . Acts as an inhibitor of the NFE2L2/NRF2 pathway via interaction with SQSTM1: interaction promotes dissociation of SQSTM1 inclusion bodies that sequester KEAP1, relieving inactivation of the BCR(KEAP1) complex .

APPLICATION

To ensure optimal assay performance, AREX recommends conducting reagent titration tailored to each testing system for optimal detection results.

WB	1:500 - 1:2000
----	----------------

*Results are sample-specific. Please refer to your local assay conditions and test parameters for reference.

PRODUCT OVERVIEW

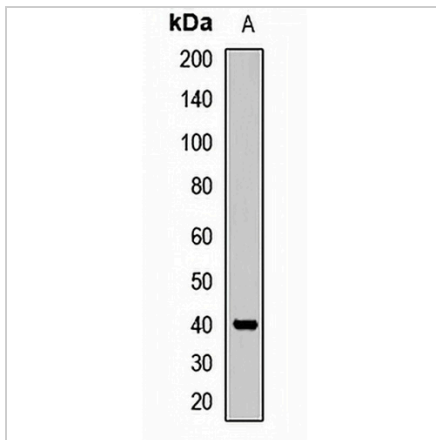
Description	Rabbit polyclonal antibody to MAP1
Specificity	Recognizes endogenous levels of MAP1 protein.
Antibody Type	Primary antibody
Immunogen	Recombinant fusion protein of human MAP1
Purification	The antibody was purified by immunogen affinity chromatography.
Molecular Weight	Predicted: 39 kD; Observed: 39 kD
Form/Buffer	Liquid in 0.42% Potassium phosphate, 0.87% Sodium chloride, pH 7.3, 30% glycerol, and 0.01% sodium azide.
Alternative Names	PNMA4; Modulator of apoptosis 1; MAP-1; MAP1; Paraneoplastic antigen Ma4
Gene Symbol	MOAP1
Entrez Gene	64112(Human); 64113(Mouse)
SwissProt	Q96BY2(Human); Q9ERH6(Mouse)

*AREX continuously optimizes our products. Webpage content may not reflect the latest updates. For inquiries, please contact info@arexbio.com or your local distributor.

*Clone Number, Reactivity, Source/Host and Clonality can be found in the product name and Key Features section above.

DATASHEET**MAP1 Rabbit Polyclonal Antibody**

CAT. NO. APA14471

DATA

Western blot analysis of MAP1 expression in MCF7 (A) whole cell lysates. (Predicted band size: 39 kD; Observed band size: 39 kD)

STORAGE

Store at 4°C short term. For long term storage, store at -20°C, avoiding freeze/thaw cycles.

NOTE

For Research Use Only. Not for diagnostic, therapeutics, prophylactic or in vivo use.