

**DATASHEET**

**TOPBP1 Rabbit Polyclonal Antibody**

CAT. NO. APA14473

**KEY FEATURES**

Target	TOPBP1	Source / Host	Rabbit
Reactivity	Human, Mouse, Rat	Clonality	Polyclonal
Applications	WB, IHC	Conjugation	Unconjugated
Form / Buffer	Liquid in 0.42% Potassium phosphate, 0.87% Sodium chloride, pH 7.3, 30% glycerol, and 0.01% sodium azide.		Storage at -20°C

**BACKGROUND**

Scaffold protein that acts as a key protein-protein adapter in DNA replication and DNA repair . Composed of multiple BRCT domains, which specifically recognize and bind phosphorylated proteins, bringing proteins together into functional combinations . Required for DNA replication initiation but not for the formation of pre-replicative complexes or the elongation stages . Necessary for the loading of replication factors onto chromatin, including GMNC, CDC45, DNA polymerases and components of the GINS complex . Plays a central role in DNA repair by bridging proteins and promoting recruitment of proteins to DNA damage sites .

**APPLICATION**

To ensure optimal assay performance, AREX recommends conducting reagent titration tailored to each testing system for optimal detection results.

WB	1:500 - 1:1000
IHC	1:50 - 1:200

\*Results are sample-specific. Please refer to your local assay conditions and test parameters for reference.

**PRODUCT OVERVIEW**

Description	Rabbit polyclonal antibody to TOPBP1
Specificity	Recognizes endogenous levels of TOPBP1 protein.
Antibody Type	Primary antibody
Immunogen	Recombinant fusion protein of human TOPBP1
Purification	The antibody was purified by immunogen affinity chromatography.
Molecular Weight	Predicted: 170 kD; Observed: 200 kD
Form/Buffer	Liquid in 0.42% Potassium phosphate, 0.87% Sodium chloride, pH 7.3, 30% glycerol, and 0.01% sodium azide.
Alternative Names	KIAA0259; DNA topoisomerase 2-binding protein 1; DNA topoisomerase II-beta-binding protein 1; TopBP1; DNA topoisomerase II-binding protein 1
Gene Symbol	TOPBP1
Entrez Gene	11073(Human); 235559(Mouse)
SwissProt	Q92547(Human); Q6ZQF0(Mouse)

\*AREX continuously optimizes our products. Webpage content may not reflect the latest updates. For inquiries, please contact [info@arexbio.com](mailto:info@arexbio.com) or your local distributor.

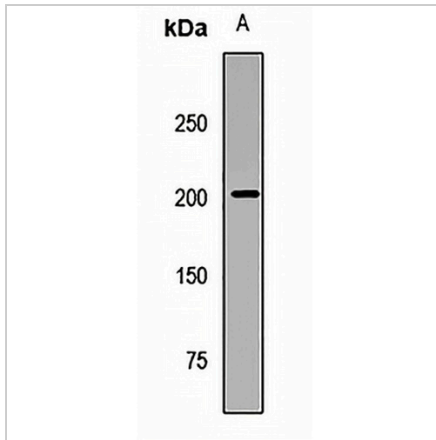
\*Clone Number, Reactivity, Source/Host and Clonality can be found in the product name and Key Features section above.

**DATASHEET**

**TOPBP1 Rabbit Polyclonal Antibody**

CAT. NO. APA14473

**DATA**



Data 2

Western blot analysis of TOPBP1 expression in HEK293T (A) whole cell lysates. (Predicted band size: 170 kD; Observed band size: 200 kD)

Immunohistochemical analysis of TOPBP1 staining in human lung cancer formalin fixed paraffin embedded tissue section. The section was pre-treated using heat mediated antigen retrieval with sodium citrate buffer (pH 6.0). The section was then incubated with the antibody at room temperature and detected using an HRP conjugated compact polymer system. DAB was used as the chromogen. The section was then counterstained with haematoxylin and mounted with DPX.

**STORAGE**

Store at 4°C short term. For long term storage, store at -20°C, avoiding freeze/thaw cycles.

**NOTE**

For Research Use Only. Not for diagnostic, therapeutics, prophylactic or in vivo use.