

DATASHEET

Cdc4 Rabbit Polyclonal Antibody

CAT. NO. APA14484

KEY FEATURES

Target	Cdc4	Source / Host	Rabbit
Reactivity	Human, Mouse	Clonality	Polyclonal
Applications	WB, IHC	Conjugation	Unconjugated
Form / Buffer	Liquid in 0.42% Potassium phosphate, 0.87% Sodium chloride, pH 7.3, 30% glycerol, and 0.01% sodium azide.		Storage at -20°C

BACKGROUND

Substrate recognition component of a SCF (SKP1-CUL1-F-box protein) E3 ubiquitin-protein ligase complex which mediates the ubiquitination and subsequent proteasomal degradation of target proteins E3 ubiquitin-protein ligase complex which mediates the ubiquitination and subsequent proteasomal degradation of target proteins . Recognizes and binds phosphorylated sites/phosphodegrons within target proteins and thereafter brings them to the SCF complex for ubiquitination . Identified substrates include cyclin-E (CCNE1 or CCNE2), DISC1, JUN, MYC, NOTCH1 released notch intracellular domain (NICD), NFE2L1, NOTCH2, MCL1, MLST8, RICTOR, and probably PSEN1 . Acts as a negative regulator of JNK signaling by binding to phosphorylated JUN and promoting its ubiquitination and subsequent degradation .

APPLICATION

To ensure optimal assay performance, AREX recommends conducting reagent titration tailored to each testing system for optimal detection results.

WB	1:500 - 1:1000
IHC	1:50 - 1:200

*Results are sample-specific. Please refer to your local assay conditions and test parameters for reference.

PRODUCT OVERVIEW

Description	Rabbit polyclonal antibody to Cdc4
Specificity	Recognizes endogenous levels of Cdc4 protein.
Antibody Type	Primary antibody
Immunogen	Recombinant fusion protein of human Cdc4
Purification	The antibody was purified by immunogen affinity chromatography.
Molecular Weight	Predicted: 66; Observed: 79 kD
Form/Buffer	Liquid in 0.42% Potassium phosphate, 0.87% Sodium chloride, pH 7.3, 30% glycerol, and 0.01% sodium azide.
Alternative Names	FBW7; FBX30; SEL10; F-box/WD repeat-containing protein 7; Archipelago homolog; hAgo; F-box and WD-40 domain-containing protein 7; F-box protein FBX30; SEL-10; hCdc4
Gene Symbol	FBXW7
Entrez Gene	55294(Human); 50754(Mouse)
SwissProt	Q969H0(Human); Q8VBV4(Mouse)

*AREX continuously optimizes our products. Webpage content may not reflect the latest updates. For inquiries, please contact info@arexbio.com or your local distributor.

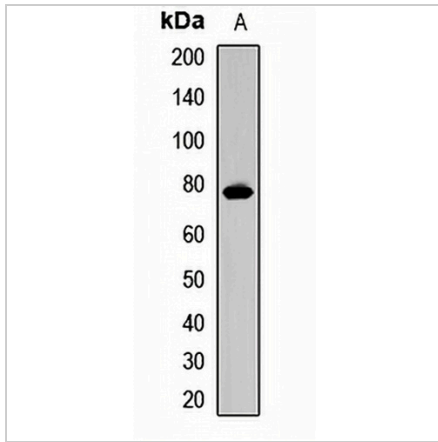
*Clone Number, Reactivity, Source/Host and Clonality can be found in the product name and Key Features section above.

DATASHEET

Cdc4 Rabbit Polyclonal Antibody

CAT. NO. APA14484

DATA



Western blot analysis of Cdc4 expression in mouse heart (A) whole cell lysates. (Predicted band size: 66; 70; 79 kD; Observed band size: 79 kD)



Immunohistochemical analysis of Cdc4 staining in human lung cancer formalin fixed paraffin embedded tissue section. The section was pre-treated using heat mediated antigen retrieval with sodium citrate buffer (pH 6.0). The section was then incubated with the antibody at room temperature and detected using an HRP conjugated compact polymer system. DAB was used as the chromogen. The section was then counterstained with haematoxylin and mounted with DPX.

STORAGE

Store at 4°C short term. For long term storage, store at -20°C, avoiding freeze/thaw cycles.

NOTE

For Research Use Only. Not for diagnostic, therapeutics, prophylactic or in vivo use.