

**DATASHEET**

**Integrin beta 7 Rabbit Polyclonal Antibody**

CAT. NO. APA14485

**KEY FEATURES**

Target	Integrin beta 7	Source / Host	Rabbit
Reactivity	Human, Mouse	Clonality	Polyclonal
Applications	WB	Conjugation	Unconjugated
Form / Buffer	Liquid in 0.42% Potassium phosphate, 0.87% Sodium chloride, pH 7.3, 30% glycerol, and 0.01% sodium azide.		Storage at -20°C

**BACKGROUND**

Integrin ITGA4/ITGB7 (alpha-4/beta-7) (Peyer patches-specific homing receptor LPAM-1) is an adhesion molecule that mediates lymphocyte migration and homing to gut-associated lymphoid tissue (GALT) (Probable). Integrin ITGA4/ITGB7 interacts with the cell surface adhesion molecules MADCAM1 which is normally expressed by the vascular endothelium of the gastrointestinal tract (Peyer patches-specific homing receptor LPAM-1) is an adhesion molecule that mediates lymphocyte migration and homing to gut-associated lymphoid tissue (GALT) (Probable). Integrin ITGA4/ITGB7 interacts with the cell surface adhesion molecules MADCAM1 which is normally expressed by the vascular endothelium of the gastrointestinal tract .

**APPLICATION**

To ensure optimal assay performance, AREX recommends conducting reagent titration tailored to each testing system for optimal detection results.

WB	1:500 - 1:2000
----	----------------

\*Results are sample-specific. Please refer to your local assay conditions and test parameters for reference.

**PRODUCT OVERVIEW**

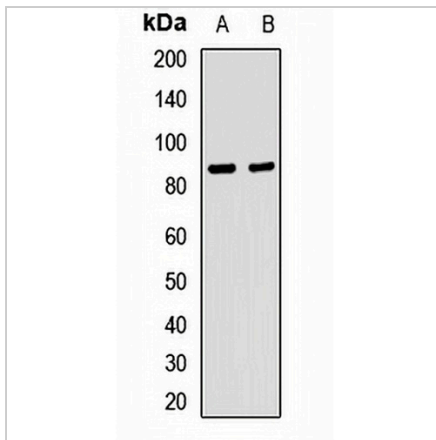
Description	Rabbit polyclonal antibody to Integrin beta 7
Specificity	Recognizes endogenous levels of Integrin beta 7 protein.
Antibody Type	Primary antibody
Immunogen	Recombinant fusion protein of human Integrin beta 7
Purification	The antibody was purified by immunogen affinity chromatography.
Molecular Weight	Predicted: 71; Observed: 87 kD
Form/Buffer	Liquid in 0.42% Potassium phosphate, 0.87% Sodium chloride, pH 7.3, 30% glycerol, and 0.01% sodium azide.
Alternative Names	Integrin beta-7; Gut homing receptor beta subunit
Gene Symbol	ITGB7
Entrez Gene	3695(Human); 16421(Mouse)
SwissProt	P26010(Human); P26011(Mouse)

\*AREX continuously optimizes our products. Webpage content may not reflect the latest updates. For inquiries, please contact [info@arexbio.com](mailto:info@arexbio.com) or your local distributor.

\*Clone Number, Reactivity, Source/Host and Clonality can be found in the product name and Key Features section above.

**DATASHEET****Integrin beta 7 Rabbit Polyclonal Antibody**

CAT. NO. APA14485

**DATA**

Western blot analysis of Integrin beta 7 expression in HT29 (A), mouse lung (B) whole cell lysates. (Predicted band size: 71; 86 kD; Observed band size: 87 kD)

**STORAGE**

Store at 4°C short term. For long term storage, store at -20°C, avoiding freeze/thaw cycles.

**NOTE**

For Research Use Only. Not for diagnostic, therapeutics, prophylactic or in vivo use.