

DATASHEET

ILF2 Rabbit Polyclonal Antibody

CAT. NO. APA14488

KEY FEATURES

Target	ILF2	Source / Host	Rabbit
Reactivity	Human, Mouse, Rat	Clonality	Polyclonal
Applications	WB	Conjugation	Unconjugated
Form / Buffer	Liquid in 0.42% Potassium phosphate, 0.87% Sodium chloride, pH 7.3, 30% glycerol, and 0.01% sodium azide.		Storage at-20°C

BACKGROUND

Chromatin-interacting protein that forms a stable heterodimer with interleukin enhancer-binding factor 3/ILF3 and plays a role in several biological processes including transcription, innate immunity or cell growth . Essential for the efficient reshuttling of ILF3 (isoform 1 and isoform 2) into the nucleus. Together with ILF3, forms an RNA-binding complex that is required for mitotic progression and cytokinesis by regulating the expression of a cluster of mitotic genes. Mechanistically, competes with STAU1/STAU2-mediated mRNA decay . Also plays a role in the inhibition of various viruses including Japanese encephalitis virus or enterovirus 71.

APPLICATION

To ensure optimal assay performance, AREX recommends conducting reagent titration tailored to each testing system for optimal detection results.

WB	1:500 - 1:1000
----	----------------

*Results are sample-specific. Please refer to your local assay conditions and test parameters for reference.

PRODUCT OVERVIEW

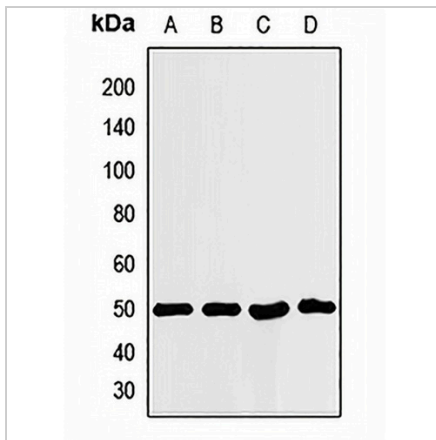
Description	Rabbit polyclonal antibody to ILF2
Specificity	Recognizes endogenous levels of ILF2 protein.
Antibody Type	Primary antibody
Immunogen	Recombinant fusion protein of human ILF2
Purification	The antibody was purified by immunogen affinity chromatography.
Molecular Weight	Predicted: 43 kD; Observed: 50 kD
Form/Buffer	Liquid in 0.42% Potassium phosphate, 0.87% Sodium chloride, pH 7.3, 30% glycerol, and 0.01% sodium azide.
Alternative Names	NF45; Interleukin enhancer-binding factor 2; Nuclear factor of activated T-cells 45 kDa
Gene Symbol	ILF2
Entrez Gene	3608(Human); 67781(Mouse); 310612(Rat)
SwissProt	Q12905(Human); Q9CXY6(Mouse); Q7TP98(Rat)

*AREX continuously optimizes our products. Webpage content may not reflect the latest updates. For inquiries, please contact info@arexbio.com or your local distributor.

*Clone Number, Reactivity, Source/Host and Clonality can be found in the product name and Key Features section above.

DATASHEET**ILF2 Rabbit Polyclonal Antibody**

CAT. NO. APA14488

DATA

Western blot analysis of ILF2 expression in A431 (A), HeLa (B), mouse brain (C), rat spinal cord (D) whole cell lysates. (Predicted band size: 43 kD; Observed band size: 50 kD)

STORAGE

Store at 4°C short term. For long term storage, store at -20°C, avoiding freeze/thaw cycles.

NOTE

For Research Use Only. Not for diagnostic, therapeutics, prophylactic or in vivo use.