

**DATASHEET**

**eTF1 Rabbit Polyclonal Antibody**

CAT. NO. APA14494

**KEY FEATURES**

Target	eTF1	Source / Host	Rabbit
Reactivity	Human, Mouse, Rat	Clonality	Polyclonal
Applications	WB, IF/ICC	Conjugation	Unconjugated
Form / Buffer	Liquid in 0.42% Potassium phosphate, 0.87% Sodium chloride, pH 7.3, 30% glycerol, and 0.01% sodium azide.		Storage at -20°C

**BACKGROUND**

Component of the eRF1-eRF3-GTP ternary complex, a ternary complex that mediates translation termination in response to the termination codons. The eRF1-eRF3-GTP complex binds to a stop codon in the ribosomal A-site. eTF1/ERF1 is responsible for stop codon recognition and inducing hydrolysis of peptidyl-tRNA. Following GTP hydrolysis, eRF3 (GSPT1/ERF3A or GSPT2/ERF3B) dissociates, permitting eTF1/eRF1 to accommodate fully in the A-site and mediate hydrolysis of peptidyl-tRNA. Component of the transient SURF complex which recruits UPF1 to stalled ribosomes in the context of nonsense-mediated decay (NMD) of mRNAs containing premature stop codons.

**APPLICATION**

To ensure optimal assay performance, AREX recommends conducting reagent titration tailored to each testing system for optimal detection results.

WB	1:500 - 1:2000
IF/ICC	1:50 - 1:200

\*Results are sample-specific. Please refer to your local assay conditions and test parameters for reference.

**PRODUCT OVERVIEW**

Description	Rabbit polyclonal antibody to eTF1
Specificity	Recognizes endogenous levels of eTF1 protein.
Antibody Type	Primary antibody
Immunogen	Recombinant fusion protein of human eTF1
Purification	The antibody was purified by immunogen affinity chromatography.
Molecular Weight	Predicted: 45; Observed: 53 kD
Form/Buffer	Liquid in 0.42% Potassium phosphate, 0.87% Sodium chloride, pH 7.3, 30% glycerol, and 0.01% sodium azide.
Alternative Names	ERF1; RF1; SUP45L1; Eukaryotic peptide chain release factor subunit 1; Eukaryotic release factor 1; eRF1; Protein Cl1; TB3-1
Gene Symbol	ETF1
Entrez Gene	2107(Human); 225363(Mouse); 307503(Rat)
SwissProt	P62495(Human); Q8BWW3(Mouse); Q5U2Q7(Rat)

\*AREX continuously optimizes our products. Webpage content may not reflect the latest updates. For inquiries, please contact [info@arexbio.com](mailto:info@arexbio.com) or your local distributor.

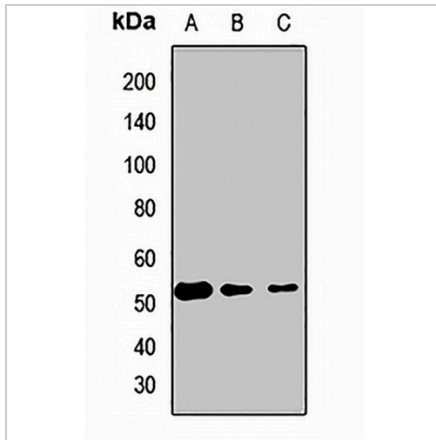
\*Clone Number, Reactivity, Source/Host and Clonality can be found in the product name and Key Features section above.

**DATASHEET**

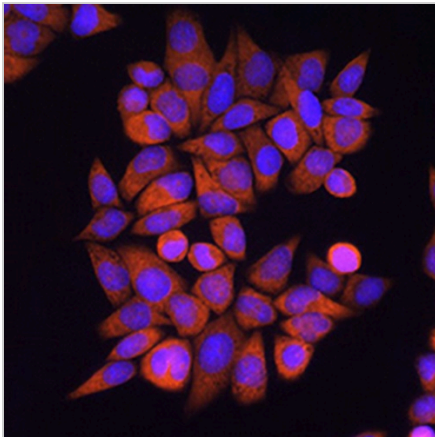
**eTF1 Rabbit Polyclonal Antibody**

CAT. NO. APA14494

**DATA**



Western blot analysis of eTF1 expression in SKOV3 (A), mouse liver (B), rat heart (C) whole cell lysates. (Predicted band size: 45; 49 kD; Observed band size: 53 kD)



Immunofluorescent analysis of eTF1 staining in HeLa cells. Formalin-fixed cells were permeabilized with 0.1% Triton X-100 in TBS for 5-10 minutes and blocked with 3% BSA-PBS for 30 minutes at room temperature. Cells were probed with the primary antibody in 3% BSA-PBS and incubated overnight at 4 °C in a humidified chamber. Cells were washed with PBST and incubated with a AREX® Fluor 594-conjugated secondary antibody (red) in PBS at room temperature in the dark. DAPI was used to stain the cell nuclei (blue).

**STORAGE**

Store at 4°C short term. For long term storage, store at -20°C, avoiding freeze/thaw cycles.

**NOTE**

For Research Use Only. Not for diagnostic, therapeutics, prophylactic or in vivo use.