

DATASHEET

POLR2B Rabbit Polyclonal Antibody

CAT. NO. APA14497

KEY FEATURES

| | | | |
|---------------|---|---------------|---------------------|
| Target | POLR2B | Source / Host | Rabbit |
| Reactivity | Human, Mouse, Rat | Clonality | Polyclonal |
| Applications | WB, IHC | Conjugation | Unconjugated |
| Form / Buffer | Liquid in 0.42% Potassium phosphate, 0.87% Sodium chloride, pH 7.3, 30% glycerol, and 0.01% sodium azide. | | Storage at -20°C |

BACKGROUND

Catalytic core component of RNA polymerase II (Pol II), a DNA-dependent RNA polymerase which synthesizes mRNA precursors and many functional non-coding RNAs using the four ribonucleoside triphosphates as substrates, a DNA-dependent RNA polymerase which synthesizes mRNA precursors and many functional non-coding RNAs using the four ribonucleoside triphosphates as substrates. Pol II-mediated transcription cycle proceeds through transcription initiation, transcription elongation and transcription termination stages.

APPLICATION

To ensure optimal assay performance, AREX recommends conducting reagent titration tailored to each testing system for optimal detection results.

| | |
|-----|----------------|
| WB | 1:500 - 1:2000 |
| IHC | 1:50 - 1:200 |

*Results are sample-specific. Please refer to your local assay conditions and test parameters for reference.

PRODUCT OVERVIEW

| | |
|-------------------|--|
| Description | Rabbit polyclonal antibody to POLR2B |
| Specificity | Recognizes endogenous levels of POLR2B protein. |
| Antibody Type | Primary antibody |
| Immunogen | Recombinant fusion protein of human POLR2B |
| Purification | The antibody was purified by immunogen affinity chromatography. |
| Molecular Weight | Predicted: 133 kD; Observed: 134 kD |
| Form/Buffer | Liquid in 0.42% Potassium phosphate, 0.87% Sodium chloride, pH 7.3, 30% glycerol, and 0.01% sodium azide. |
| Alternative Names | DNA-directed RNA polymerase II subunit RPB2; DNA-directed RNA polymerase II 140 kDa polypeptide; DNA-directed RNA polymerase II subunit B; RNA polymerase II subunit 2; RNA polymerase II subunit B2 |
| Gene Symbol | POLR2B |
| Entrez Gene | 5431(Human); 231329(Mouse) |
| SwissProt | P30876(Human); Q8CFI7(Mouse) |

*AREX continuously optimizes our products. Webpage content may not reflect the latest updates. For inquiries, please contact info@arexbio.com or your local distributor.

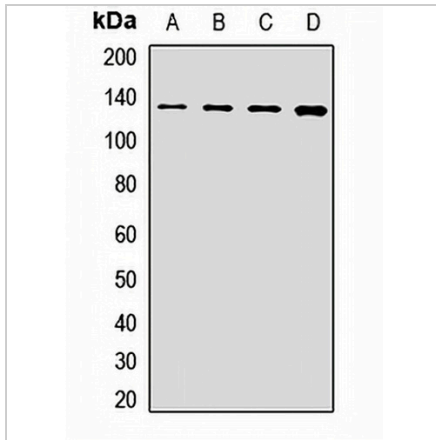
*Clone Number, Reactivity, Source/Host and Clonality can be found in the product name and Key Features section above.

DATASHEET

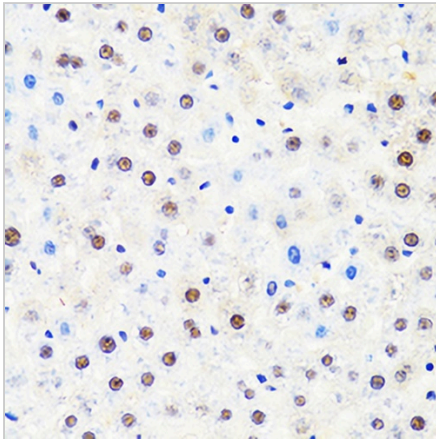
POLR2B Rabbit Polyclonal Antibody

CAT. NO. APA14497

DATA



Western blot analysis of POLR2B expression in SHSY5Y (A), HepG2 (B), mouse brain (C), rat ovary (D) whole cell lysates. (Predicted band size: 133 kD; Observed band size: 134 kD)



Immunohistochemical analysis of POLR2B staining in rat liver formalin fixed paraffin embedded tissue section. The section was pre-treated using heat mediated antigen retrieval with sodium citrate buffer (pH 6.0). The section was then incubated with the antibody at room temperature and detected using an HRP conjugated compact polymer system. DAB was used as the chromogen. The section was then counterstained with haematoxylin and mounted with DPX.

STORAGE

Store at 4°C short term. For long term storage, store at -20°C, avoiding freeze/thaw cycles.

NOTE

For Research Use Only. Not for diagnostic, therapeutics, prophylactic or in vivo use.