

DATASHEET

SR-alpha Rabbit Polyclonal Antibody

CAT. NO. APA14499

KEY FEATURES

Target	SR-alpha	Source / Host	Rabbit
Reactivity	Human, Mouse	Clonality	Polyclonal
Applications	WB	Conjugation	Unconjugated
Form / Buffer	Liquid in 0.42% Potassium phosphate, 0.87% Sodium chloride, pH 7.3, 30% glycerol, and 0.01% sodium azide.		Storage at -20°C

BACKGROUND

Component of the signal recognition particle (SRP) complex receptor (SR) complex receptor (SR) . Ensures, in conjunction with the SRP complex, the correct targeting of the nascent secretory proteins to the endoplasmic reticulum membrane system . Forms a guanosine 5'-triphosphate (GTP)-dependent complex with the SRP subunit SRP54 . SRP receptor compaction and GTPase rearrangement drive SRP-mediated cotranslational protein translocation into the ER .

APPLICATION

To ensure optimal assay performance, AREX recommends conducting reagent titration tailored to each testing system for optimal detection results.

WB	1:500 - 1:2000
----	----------------

*Results are sample-specific. Please refer to your local assay conditions and test parameters for reference.

PRODUCT OVERVIEW

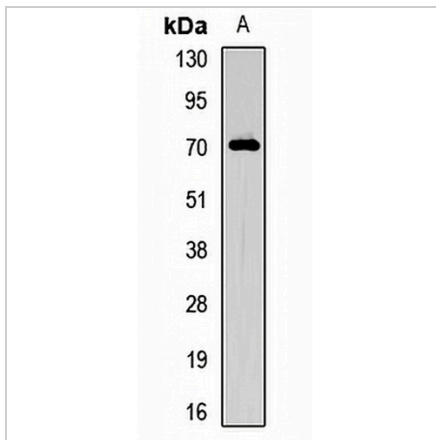
Description	Rabbit polyclonal antibody to SR- alpha
Specificity	Recognizes endogenous levels of SR- alpha protein.
Antibody Type	Primary antibody
Immunogen	Recombinant fusion protein of human SR- alpha
Purification	The antibody was purified by immunogen affinity chromatography.
Molecular Weight	Predicted: 66; Observed: 70 kD
Form/Buffer	Liquid in 0.42% Potassium phosphate, 0.87% Sodium chloride, pH 7.3, 30% glycerol, and 0.01% sodium azide.
Alternative Names	Signal recognition particle receptor subunit alpha; SR-alpha; Docking protein alpha; DP-alpha
Gene Symbol	SRPR
Entrez Gene	6734(Human); 67398(Mouse)
SwissProt	P08240(Human); Q9DBG7(Mouse)

*AREX continuously optimizes our products. Webpage content may not reflect the latest updates. For inquiries, please contact info@arexbio.com or your local distributor.

*Clone Number, Reactivity, Source/Host and Clonality can be found in the product name and Key Features section above.

DATASHEET**SR-alpha Rabbit Polyclonal Antibody**

CAT. NO. APA14499

DATA

Western blot analysis of SR- alpha expression in A549 (A) whole cell lysates. (Predicted band size: 66; 69 kD; Observed band size: 70 kD)

STORAGE

Store at 4°C short term. For long term storage, store at -20°C, avoiding freeze/thaw cycles.

NOTE

For Research Use Only. Not for diagnostic, therapeutics, prophylactic or in vivo use.