

DATASHEET

FXR1 Rabbit Polyclonal Antibody

CAT. NO. APA14501

KEY FEATURES

Target	FXR1	Source / Host	Rabbit
Reactivity	Human, Mouse, Rat	Clonality	Polyclonal
Applications	WB	Conjugation	Unconjugated
Form / Buffer	Liquid in 0.42% Potassium phosphate, 0.87% Sodium chloride, pH 7.3, 30% glycerol, and 0.01% sodium azide.		Storage at-20°C

BACKGROUND

mRNA-binding protein that acts as a regulator of mRNAs translation and/or stability, and which is required for various processes, such as neurogenesis, muscle development and spermatogenesis . Specifically binds to AU-rich elements (AREs) in the 3'-UTR of target mRNAs . Promotes formation of some phase-separated membraneless compartment by undergoing liquid-liquid phase separation upon binding to AREs-containing mRNAs, leading to assemble mRNAs into cytoplasmic ribonucleoprotein granules that concentrate mRNAs with associated regulatory factors .

APPLICATION

To ensure optimal assay performance, AREX recommends conducting reagent titration tailored to each testing system for optimal detection results.

WB	1:500 - 1:1000
----	----------------

*Results are sample-specific. Please refer to your local assay conditions and test parameters for reference.

PRODUCT OVERVIEW

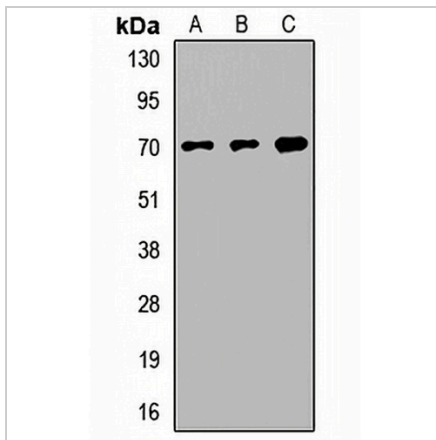
Description	Rabbit polyclonal antibody to FXR1
Specificity	Recognizes endogenous levels of FXR1 protein.
Antibody Type	Primary antibody
Immunogen	KLH-conjugated synthetic peptide of human FXR1
Purification	The antibody was purified by immunogen affinity chromatography.
Molecular Weight	Predicted: 59; Observed: 68 kD
Form/Buffer	Liquid in 0.42% Potassium phosphate, 0.87% Sodium chloride, pH 7.3, 30% glycerol, and 0.01% sodium azide.
Alternative Names	Fragile X mental retardation syndrome-related protein 1; hFXR1p
Gene Symbol	FXR1
Entrez Gene	8087(Human); 14359(Mouse); 361927(Rat)
SwissProt	P51114(Human); Q61584(Mouse); Q5XI81(Rat)

*AREX continuously optimizes our products. Webpage content may not reflect the latest updates. For inquiries, please contact info@arexbio.com or your local distributor.

*Clone Number, Reactivity, Source/Host and Clonality can be found in the product name and Key Features section above.

DATASHEET**FXR1 Rabbit Polyclonal Antibody**

CAT. NO. APA14501

DATA

Western blot analysis of FXR1 expression in HeLa (A), NIH3T3 (B), mouse heart (C) whole cell lysates. (Predicted band size: 59; 60; 69 kD; Observed band size: 68 kD)

STORAGE

Store at 4°C short term. For long term storage, store at -20°C, avoiding freeze/thaw cycles.

NOTE

For Research Use Only. Not for diagnostic, therapeutics, prophylactic or in vivo use.