

DATASHEET

MetaP2 Rabbit Polyclonal Antibody

CAT. NO. APA14503

KEY FEATURES

Target	MetaP2	Source / Host	Rabbit
Reactivity	Human, Mouse, Rat	Clonality	Polyclonal
Applications	WB	Conjugation	Unconjugated
Form / Buffer	Liquid in 0.42% Potassium phosphate, 0.87% Sodium chloride, pH 7.3, 30% glycerol, and 0.01% sodium azide.		Storage at-20°C

BACKGROUND

Cotranslationally removes the N-terminal methionine from nascent proteins. The N-terminal methionine is often cleaved when the second residue in the primary sequence is small and uncharged (Met-Ala-, Cys, Gly, Pro, Ser, Thr, or Val). The catalytic activity of human METAP2 toward Met-Val peptides is consistently two orders of magnitude higher than that of METAP1, suggesting that it is responsible for processing proteins containing N-terminal Met-Val and Met-Thr sequences in vivo.; Protects eukaryotic initiation factor EIF2S1 from translation-inhibiting phosphorylation by inhibitory kinases such as EIF2AK2/PKR and EIF2AK1/HCR. Plays a critical role in the regulation of protein synthesis.

APPLICATION

To ensure optimal assay performance, AREX recommends conducting reagent titration tailored to each testing system for optimal detection results.

WB	1:500 - 1:2000
----	----------------

*Results are sample-specific. Please refer to your local assay conditions and test parameters for reference.

PRODUCT OVERVIEW

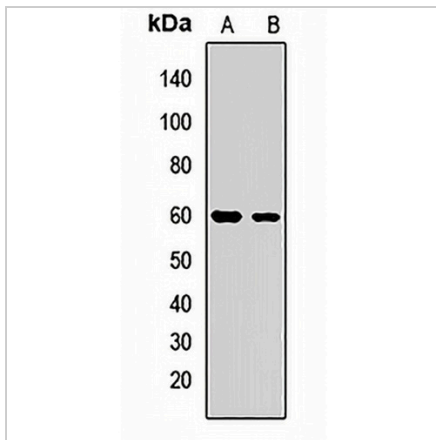
Description	Rabbit polyclonal antibody to MetaP2
Specificity	Recognizes endogenous levels of MetaP2 protein.
Antibody Type	Primary antibody
Immunogen	Recombinant fusion protein of human MetaP2
Purification	The antibody was purified by immunogen affinity chromatography.
Molecular Weight	Predicted: 50; Observed: 60 kD
Form/Buffer	Liquid in 0.42% Potassium phosphate, 0.87% Sodium chloride, pH 7.3, 30% glycerol, and 0.01% sodium azide.
Alternative Names	MNPEP; P67EIF2; Methionine aminopeptidase 2; MAP 2; MetAP 2; Initiation factor 2-associated 67 kDa glycoprotein; p67; p67eIF2; Peptidase M
Gene Symbol	METAP2
Entrez Gene	10988(Human); 56307(Mouse); 64370(Rat)
SwissProt	P50579(Human); O08663(Mouse); P38062(Rat)

*AREX continuously optimizes our products. Webpage content may not reflect the latest updates. For inquiries, please contact info@arexbio.com or your local distributor.

*Clone Number, Reactivity, Source/Host and Clonality can be found in the product name and Key Features section above.

DATASHEET**MetaP2 Rabbit Polyclonal Antibody**

CAT. NO. APA14503

DATA

Western blot analysis of MetaP2 expression in HepG2 (A), MCF7 (B) whole cell lysates.
(Predicted band size: 50; 52 kD; Observed band size: 60 kD)

STORAGE

Store at 4°C short term. For long term storage, store at -20°C, avoiding freeze/thaw cycles.

NOTE

For Research Use Only. Not for diagnostic, therapeutics, prophylactic or in vivo use.