

**DATASHEET**

**AQR Rabbit Polyclonal Antibody**

CAT. NO. APA14509

**KEY FEATURES**

Target	AQR	Source / Host	Rabbit
Reactivity	Human, Mouse	Clonality	Polyclonal
Applications	WB	Conjugation	Unconjugated
Form / Buffer	Liquid in 0.42% Potassium phosphate, 0.87% Sodium chloride, pH 7.3, 30% glycerol, and 0.01% sodium azide.		Storage at -20°C

**BACKGROUND**

Involved in pre-mRNA splicing as component of the spliceosome . Intron-binding spliceosomal protein required to link pre-mRNA splicing and snoRNP (small nucleolar ribonucleoprotein) biogenesis . Plays a key role in position-dependent assembly of intron-encoded box C/D small snoRNP, splicing being required for snoRNP assembly . May act by helping the folding of the snoRNA sequence. Binds to intron of pre-mRNAs in a sequence-independent manner, contacting the region between snoRNA and the branchpoint of introns (40 nucleotides upstream of the branchpoint) during the late stages of splicing . Has ATP-dependent RNA helicase activity and can unwind double-stranded RNA molecules with a 3' overhang (in vitro) .

**APPLICATION**

To ensure optimal assay performance, AREX recommends conducting reagent titration tailored to each testing system for optimal detection results.

WB	1:500 - 1:1000
----	----------------

\*Results are sample-specific. Please refer to your local assay conditions and test parameters for reference.

**PRODUCT OVERVIEW**

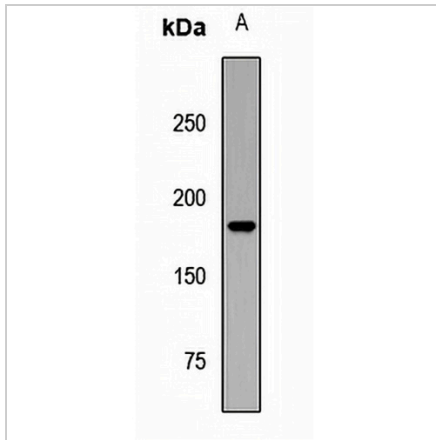
Description	Rabbit polyclonal antibody to AQR
Specificity	Recognizes endogenous levels of AQR protein.
Antibody Type	Primary antibody
Immunogen	KLH-conjugated synthetic peptide of human AQR
Purification	The antibody was purified by immunogen affinity chromatography.
Molecular Weight	Predicted: 171 kD; Observed: 171 kD
Form/Buffer	Liquid in 0.42% Potassium phosphate, 0.87% Sodium chloride, pH 7.3, 30% glycerol, and 0.01% sodium azide.
Alternative Names	KIAA0560; Intron-binding protein aquarius; Intron-binding protein of 160 kDa; IBP160
Gene Symbol	AQR
Entrez Gene	9716(Human); 11834(Mouse)
SwissProt	O60306(Human); Q8CFQ3(Mouse)

\*AREX continuously optimizes our products. Webpage content may not reflect the latest updates. For inquiries, please contact [info@arexbio.com](mailto:info@arexbio.com) or your local distributor.

\*Clone Number, Reactivity, Source/Host and Clonality can be found in the product name and Key Features section above.

**DATASHEET****AQR Rabbit Polyclonal Antibody**

CAT. NO. APA14509

**DATA**

Western blot analysis of AQR expression in HeLa (A) whole cell lysates. (Predicted band size: 171 kD; Observed band size: 171 kD)

**STORAGE**

Store at 4°C short term. For long term storage, store at -20°C, avoiding freeze/thaw cycles.

**NOTE**

For Research Use Only. Not for diagnostic, therapeutics, prophylactic or in vivo use.