

DATASHEET

PABPN1 Rabbit Polyclonal Antibody

CAT. NO. APA14514

KEY FEATURES

Target	PABPN1	Source / Host	Rabbit
Reactivity	Human, Mouse	Clonality	Polyclonal
Applications	WB	Conjugation	Unconjugated
Form / Buffer	Liquid in 0.42% Potassium phosphate, 0.87% Sodium chloride, pH 7.3, 30% glycerol, and 0.01% sodium azide.		Storage at -20°C

BACKGROUND

Involved in the 3'-end formation of mRNA precursors (pre-mRNA) by the addition of a poly(A) tail of 200-250 nt to the upstream cleavage product . Stimulates poly(A) polymerase (PAPOLA) conferring processivity on the poly(A) tail elongation reaction and also controls the poly(A) tail length . Increases the affinity of poly(A) polymerase for RNA . Is also present at various stages of mRNA metabolism including nucleocytoplasmic trafficking and nonsense-mediated decay (NMD) of mRNA. Cooperates with SKIP to synergistically activate E-box-mediated transcription through MYOD1 and may regulate the expression of muscle-specific genes by the addition of a poly(A) tail of 200-250 nt to the upstream cleavage product .

APPLICATION

To ensure optimal assay performance, AREX recommends conducting reagent titration tailored to each testing system for optimal detection results.

WB	1:500 - 1:2000
----	----------------

*Results are sample-specific. Please refer to your local assay conditions and test parameters for reference.

PRODUCT OVERVIEW

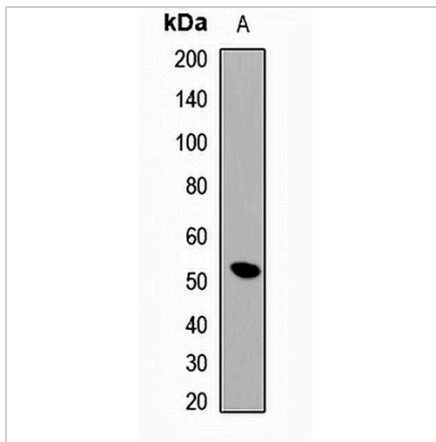
Description	Rabbit polyclonal antibody to PABPN1
Specificity	Recognizes endogenous levels of PABPN1 protein.
Antibody Type	Primary antibody
Immunogen	KLH-conjugated synthetic peptide of human PABPN1
Purification	The antibody was purified by immunogen affinity chromatography.
Molecular Weight	Predicted: 31; Observed: 50 kD
Form/Buffer	Liquid in 0.42% Potassium phosphate, 0.87% Sodium chloride, pH 7.3, 30% glycerol, and 0.01% sodium azide.
Alternative Names	PAB2; PABP2; Polyadenylate-binding protein 2; PABP-2; Poly(A)-binding protein 2; Nuclear poly(A)-binding protein 1; Poly(A)-binding protein II; PABII; Polyadenylate-binding nuclear protein 1
Gene Symbol	PABPN1
Entrez Gene	8106(Human); 54196(Mouse)
SwissProt	Q86U42(Human); Q8CCS6(Mouse)

*AREX continuously optimizes our products. Webpage content may not reflect the latest updates. For inquiries, please contact info@arexbio.com or your local distributor.

*Clone Number, Reactivity, Source/Host and Clonality can be found in the product name and Key Features section above.

DATASHEET**PABPN1 Rabbit Polyclonal Antibody**

CAT. NO. APA14514

DATA

Western blot analysis of PABPN1 expression in HeLa (A) whole cell lysates. (Predicted band size: 31; 32; 37 kD; Observed band size: 50 kD)

STORAGE

Store at 4°C short term. For long term storage, store at -20°C, avoiding freeze/thaw cycles.

NOTE

For Research Use Only. Not for diagnostic, therapeutics, prophylactic or in vivo use.