

DATASHEET

PIWIL2 Rabbit Polyclonal Antibody

CAT. NO. APA14515

KEY FEATURES

Target	PIWIL2	Source / Host	Rabbit
Reactivity	Human, Mouse, Rat	Clonality	Polyclonal
Applications	WB, IHC	Conjugation	Unconjugated
Form / Buffer	Liquid in 0.42% Potassium phosphate, 0.87% Sodium chloride, pH 7.3, 30% glycerol, and 0.01% sodium azide.		Storage at -20°C

BACKGROUND

Endoribonuclease that plays a central role during spermatogenesis by repressing transposable elements and preventing their mobilization, which is essential for the germline integrity. Plays an essential role in meiotic differentiation of spermatocytes, germ cell differentiation and in self-renewal of spermatogonial stem cells. Acts via the piRNA metabolic process, which mediates the repression of transposable elements during meiosis by forming complexes composed of piRNAs and Piwi proteins and govern the methylation and subsequent repression of transposons.

APPLICATION

To ensure optimal assay performance, AREX recommends conducting reagent titration tailored to each testing system for optimal detection results.

WB	1:500 - 1:2000
IHC	1:50 - 1:200

*Results are sample-specific. Please refer to your local assay conditions and test parameters for reference.

PRODUCT OVERVIEW

Description	Rabbit polyclonal antibody to PIWIL2
Specificity	Recognizes endogenous levels of PIWIL2 protein.
Antibody Type	Primary antibody
Immunogen	Recombinant fusion protein of human PIWIL2
Purification	The antibody was purified by immunogen affinity chromatography.
Molecular Weight	Predicted: 105; Observed: 110 kD
Form/Buffer	Liquid in 0.42% Potassium phosphate, 0.87% Sodium chloride, pH 7.3, 30% glycerol, and 0.01% sodium azide.
Alternative Names	HILI; Piwi-like protein 2; Cancer/testis antigen 80; CT80
Gene Symbol	PIWIL2
Entrez Gene	55124(Human); 57746(Mouse)
SwissProt	Q8TC59(Human); Q8CDG1(Mouse)

*AREX continuously optimizes our products. Webpage content may not reflect the latest updates. For inquiries, please contact info@arexbio.com or your local distributor.

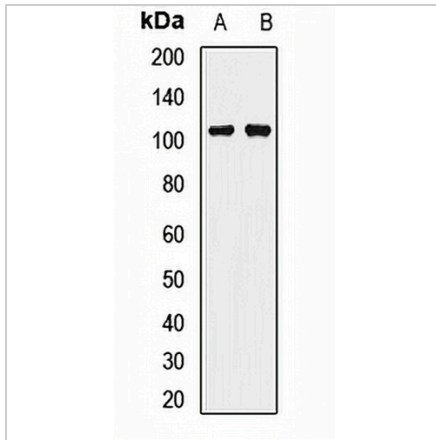
*Clone Number, Reactivity, Source/Host and Clonality can be found in the product name and Key Features section above.

DATASHEET

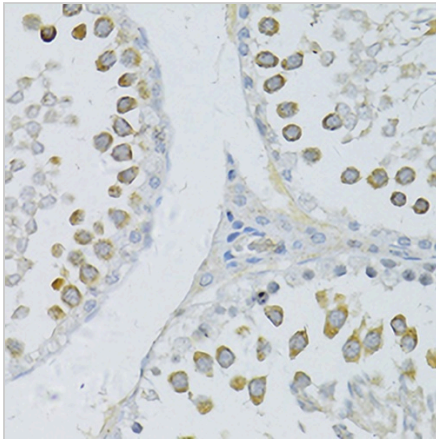
PIWIL2 Rabbit Polyclonal Antibody

CAT. NO. APA14515

DATA



Western blot analysis of PIWIL2 expression in mouse skeletal muscle (A), rat skeletal muscle (B) whole cell lysates. (Predicted band size: 105; 109 kD; Observed band size: 110 kD)



Immunohistochemical analysis of PIWIL2 staining in rat testis formalin fixed paraffin embedded tissue section. The section was pre-treated using heat mediated antigen retrieval with sodium citrate buffer (pH 6.0). The section was then incubated with the antibody at room temperature and detected using an HRP conjugated compact polymer system. DAB was used as the chromogen. The section was then counterstained with haematoxylin and mounted with DPX.

STORAGE

Store at 4°C short term. For long term storage, store at -20°C, avoiding freeze/thaw cycles.

NOTE

For Research Use Only. Not for diagnostic, therapeutics, prophylactic or in vivo use.