

DATASHEET

CIRBP Rabbit Polyclonal Antibody

CAT. NO. APA14520

KEY FEATURES

Target	CIRBP	Source / Host	Rabbit
Reactivity	Human, Mouse, Rat	Clonality	Polyclonal
Applications	WB, IHC	Conjugation	Unconjugated
Form / Buffer	Liquid in 0.42% Potassium phosphate, 0.87% Sodium chloride, pH 7.3, 30% glycerol, and 0.01% sodium azide.		Storage at-20°C

BACKGROUND

Cold-inducible mRNA binding protein that plays a protective role in the genotoxic stress response by stabilizing transcripts of genes involved in cell survival. Acts as a translational activator. Seems to play an essential role in cold-induced suppression of cell proliferation. Binds specifically to the 3'-untranslated regions (3'-UTRs) of stress-responsive transcripts RPA2 and TXN. Acts as a translational repressor. Promotes assembly of stress granules (SGs), when overexpressed.

APPLICATION

To ensure optimal assay performance, AREX recommends conducting reagent titration tailored to each testing system for optimal detection results.

WB	1:500 - 1:1000
IHC	1:50 - 1:200

*Results are sample-specific. Please refer to your local assay conditions and test parameters for reference.

PRODUCT OVERVIEW

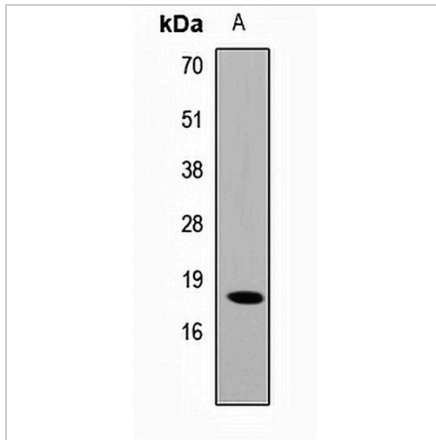
Description	Rabbit polyclonal antibody to CIRBP
Specificity	Recognizes endogenous levels of CIRBP protein.
Antibody Type	Primary antibody
Immunogen	KLH-conjugated synthetic peptide of human CIRBP
Purification	The antibody was purified by immunogen affinity chromatography.
Molecular Weight	Predicted: 18; Observed: 18 kD
Form/Buffer	Liquid in 0.42% Potassium phosphate, 0.87% Sodium chloride, pH 7.3, 30% glycerol, and 0.01% sodium azide.
Alternative Names	A18HNRNP; CIRP; Cold-inducible RNA-binding protein; A18 hnRNP; Glycine-rich RNA-binding protein CIRP
Gene Symbol	CIRBP
Entrez Gene	1153(Human); 12696(Mouse); 81825(Rat)
SwissProt	Q14011(Human); P60824(Mouse); P60825(Rat)

*AREX continuously optimizes our products. Webpage content may not reflect the latest updates. For inquiries, please contact info@arexbio.com or your local distributor.

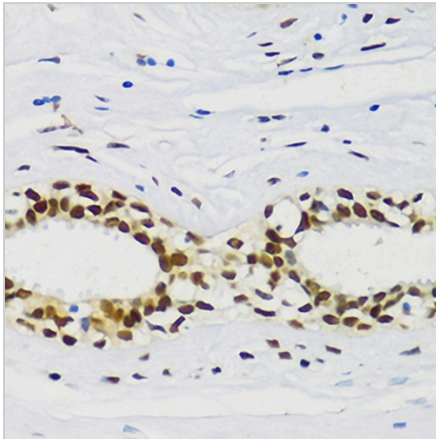
*Clone Number, Reactivity, Source/Host and Clonality can be found in the product name and Key Features section above.

DATASHEET**CIRBP Rabbit Polyclonal Antibody**

CAT. NO. APA14520

DATA

Western blot analysis of CIRBP expression in HEK293T (A) whole cell lysates. (Predicted band size: 18; 26; 28 kD; Observed band size: 18 kD)



Immunohistochemical analysis of CIRBP staining in human breast cancer formalin fixed paraffin embedded tissue section. The section was pre-treated using heat mediated antigen retrieval with sodium citrate buffer (pH 6.0). The section was then incubated with the antibody at room temperature and detected using an HRP conjugated compact polymer system. DAB was used as the chromogen. The section was then counterstained with haematoxylin and mounted with DPX.

STORAGE

Store at 4°C short term. For long term storage, store at -20°C, avoiding freeze/thaw cycles.

NOTE

For Research Use Only. Not for diagnostic, therapeutics, prophylactic or in vivo use.