

DATASHEET

LRP6 Rabbit Polyclonal Antibody

CAT. NO. APA14525

KEY FEATURES

Target	LRP6	Source / Host	Rabbit
Reactivity	Human, Mouse, Rat	Clonality	Polyclonal
Applications	WB, IHC	Conjugation	Unconjugated
Form / Buffer	Liquid in 0.42% Potassium phosphate, 0.87% Sodium chloride, pH 7.3, 30% glycerol, and 0.01% sodium azide.		Storage at -20°C

BACKGROUND

Component of the Wnt-Fzd-LRP5-LRP6 complex that triggers beta-catenin signaling through inducing aggregation of receptor-ligand complexes into ribosome-sized signalosomes. Cell-surface coreceptor of Wnt/beta-catenin signaling, which plays a pivotal role in various processes including retinal angiogenesis and bone formation. The Wnt-induced Fzd/LRP6 coreceptor complex recruits DVL1 polymers to the plasma membrane which, in turn, recruits the AXIN1/GSK3B-complex to the cell surface promoting the formation of signalosomes and inhibiting AXIN1/GSK3-mediated phosphorylation and destruction of beta-catenin. Required for posterior patterning of the epiblast during gastrulation.

APPLICATION

To ensure optimal assay performance, AREX recommends conducting reagent titration tailored to each testing system for optimal detection results.

WB	1:500 - 1:2000
IHC	1:50 - 1:200

*Results are sample-specific. Please refer to your local assay conditions and test parameters for reference.

PRODUCT OVERVIEW

Description	Rabbit polyclonal antibody to LRP6
Specificity	Recognizes endogenous levels of LRP6 protein.
Antibody Type	Primary antibody
Immunogen	Recombinant fusion protein of human LRP6
Purification	The antibody was purified by immunogen affinity chromatography.
Molecular Weight	Predicted: 180 kD; Observed: 180 kD
Form/Buffer	Liquid in 0.42% Potassium phosphate, 0.87% Sodium chloride, pH 7.3, 30% glycerol, and 0.01% sodium azide.
Alternative Names	Low-density lipoprotein receptor-related protein 6; LRP-6
Gene Symbol	LRP6
Entrez Gene	4040(Human); 16974(Mouse)
SwissProt	O75581(Human); O88572(Mouse)

*AREX continuously optimizes our products. Webpage content may not reflect the latest updates. For inquiries, please contact info@arexbio.com or your local distributor.

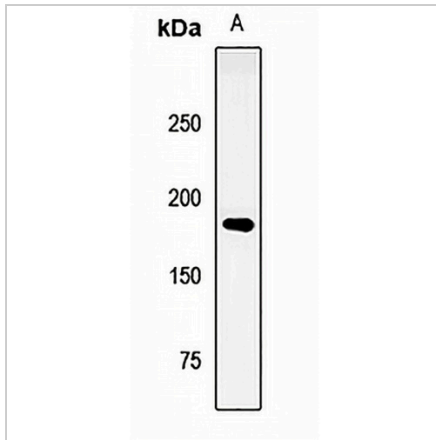
*Clone Number, Reactivity, Source/Host and Clonality can be found in the product name and Key Features section above.

DATASHEET

LRP6 Rabbit Polyclonal Antibody

CAT. NO. APA14525

DATA



Western blot analysis of LRP6 expression in rat lung (A) whole cell lysates. (Predicted band size: 180 kD; Observed band size: 180 kD)

Data 2

Immunohistochemical analysis of LRP6 staining in human breast cancer formalin fixed paraffin embedded tissue section. The section was pre-treated using heat mediated antigen retrieval with sodium citrate buffer (pH 6.0). The section was then incubated with the antibody at room temperature and detected using an HRP conjugated compact polymer system. DAB was used as the chromogen. The section was then counterstained with haematoxylin and mounted with DPX.

STORAGE

Store at 4°C short term. For long term storage, store at -20°C, avoiding freeze/thaw cycles.

NOTE

For Research Use Only. Not for diagnostic, therapeutics, prophylactic or in vivo use.