

DATASHEET

SMYD5 Rabbit Polyclonal Antibody

CAT. NO. APA14527

KEY FEATURES

Target	SMYD5	Source / Host	Rabbit
Reactivity	Human	Clonality	Polyclonal
Applications	WB	Conjugation	Unconjugated
Form / Buffer	Liquid in 0.42% Potassium phosphate, 0.87% Sodium chloride, pH 7.3, 30% glycerol, and 0.01% sodium azide.		Storage at -20°C

BACKGROUND

Protein-lysine N-trimethyltransferase that specifically catalyzes trimethylation of 'Lys-22' of the RPL40/eL40 subunit of the 60S ribosome, thereby promoting translation elongation and protein synthesis . May also act as a histone methyltransferase in the context of histone octamers, but not on nucleosome substrates: trimethylates 'Lys-36' of histone H3 and 'Lys-20' of histone H4 to form H3K36me3 and H4K20me3, respectively . The histone methyltransferase activity, which is independent of its SET domain, is however unsure in vivo . In association with the NCoR corepressor complex, involved in the repression of toll-like receptor 4 (TLR4)-target inflammatory genes in macrophages, possibly by catalyzing the formation of H4K20me3 at the gene promoters .

APPLICATION

To ensure optimal assay performance, AREX recommends conducting reagent titration tailored to each testing system for optimal detection results.

WB	1:500 - 1:1000
----	----------------

*Results are sample-specific. Please refer to your local assay conditions and test parameters for reference.

PRODUCT OVERVIEW

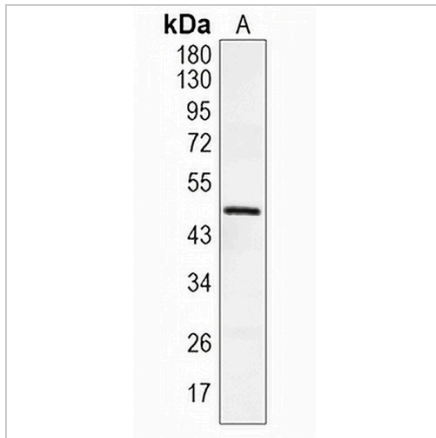
Description	Rabbit polyclonal antibody to SMYD5
Specificity	Recognizes endogenous levels of SMYD5 protein.
Antibody Type	Primary antibody
Immunogen	Recombinant fusion protein of human SMYD5
Purification	The antibody was purified by immunogen affinity chromatography.
Molecular Weight	Predicted: 47 kD; Observed: 48 kD
Form/Buffer	Liquid in 0.42% Potassium phosphate, 0.87% Sodium chloride, pH 7.3, 30% glycerol, and 0.01% sodium azide.
Alternative Names	RAI15; SET and MYND domain-containing protein 5; Protein NN8-4AG; Retinoic acid-induced protein 15
Gene Symbol	SMYD5
Entrez Gene	10322(Human)
SwissProt	Q6GMV2(Human)

*AREX continuously optimizes our products. Webpage content may not reflect the latest updates. For inquiries, please contact info@arexbio.com or your local distributor.

*Clone Number, Reactivity, Source/Host and Clonality can be found in the product name and Key Features section above.

DATASHEET**SMYD5 Rabbit Polyclonal Antibody**

CAT. NO. APA14527

DATA

Western blot analysis of SMYD5 expression in MCF7 (A) whole cell lysates. (Predicted band size: 47 kD; Observed band size: 48 kD)

STORAGE

Store at 4°C short term. For long term storage, store at -20°C, avoiding freeze/thaw cycles.

NOTE

For Research Use Only. Not for diagnostic, therapeutics, prophylactic or in vivo use.