

DATASHEET

GLI2 Rabbit Polyclonal Antibody

CAT. NO. APA14544

KEY FEATURES

Target	GLI2	Source / Host	Rabbit
Reactivity	Human	Clonality	Polyclonal
Applications	WB, IHC, IF/ICC, FC	Conjugation	Unconjugated
Form / Buffer	Liquid in 0.42% Potassium phosphate, 0.87% Sodium chloride, pH 7.3, 30% glycerol, and 0.01% sodium azide.		Storage at-20°C

BACKGROUND

Functions as a transcription regulator in the hedgehog (Hh) pathway pathway . Functions as a transcriptional activator . May also function as transcriptional repressor . Requires STK36 for full transcriptional activator activity. Required for normal embryonic development .

APPLICATION

To ensure optimal assay performance, AREX recommends conducting reagent titration tailored to each testing system for optimal detection results.

WB	1:500 - 1:1000
IHC	1:50 - 1:100
IF/ICC	1:50 - 1:200
FC	1:100 - 1:200

*Results are sample-specific. Please refer to your local assay conditions and test parameters for reference.

PRODUCT OVERVIEW

Description	Rabbit polyclonal antibody to GLI2
Specificity	Recognizes endogenous levels of GLI2 protein.
Antibody Type	Primary antibody
Immunogen	Recombinant fusion protein of human GLI2
Purification	The antibody was purified by immunogen affinity chromatography.
Molecular Weight	Predicted: 167 kD; Observed: 128 kD
Form/Buffer	Liquid in 0.42% Potassium phosphate, 0.87% Sodium chloride, pH 7.3, 30% glycerol, and 0.01% sodium azide.
Alternative Names	THP; Zinc finger protein GLI2; Tax helper protein
Gene Symbol	GLI2
Entrez Gene	2736(Human)
SwissProt	P10070(Human)

*AREX continuously optimizes our products. Webpage content may not reflect the latest updates. For inquiries, please contact info@arexbio.com or your local distributor.

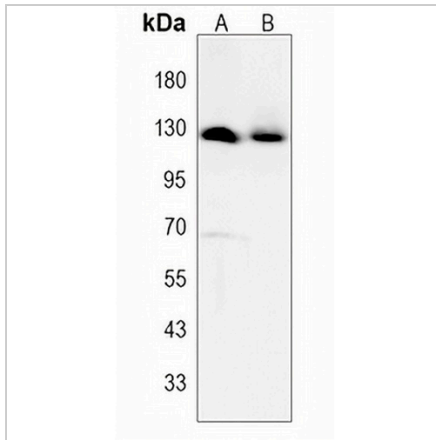
*Clone Number, Reactivity, Source/Host and Clonality can be found in the product name and Key Features section above.

DATASHEET

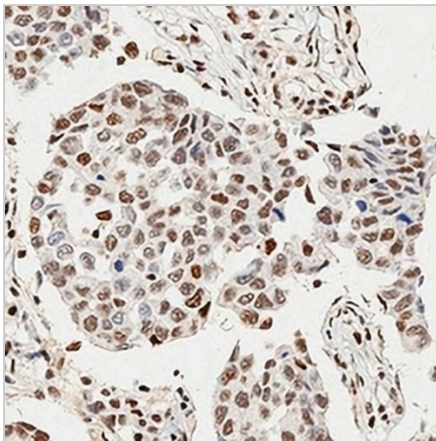
GLI2 Rabbit Polyclonal Antibody

CAT. NO. APA14544

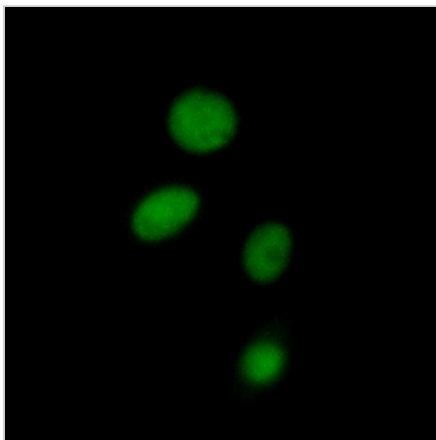
DATA



Western blot analysis of GLI2 expression in Jurkat (A), CCRF-CEM (B) whole cell lysates. (Predicted band size: 167 kD; Observed band size: 128 kD)



Immunohistochemical analysis of GLI2 staining in human breast cancer formalin fixed paraffin embedded tissue section. The section was pre-treated using heat mediated antigen retrieval with sodium citrate buffer (pH 6.0). The section was then incubated with the antibody at room temperature and detected using an HRP conjugated compact polymer system. DAB was used as the chromogen. The section was then counterstained with haematoxylin and mounted with DPX.



Immunofluorescent analysis of GLI2 staining in PC3 cells. Formalin-fixed cells were permeabilized with 0.1% Triton X-100 in TBS for 5-10 minutes and blocked with 3% BSA-PBS for 30 minutes at room temperature. Cells were probed with the primary antibody in 3% BSA-PBS and incubated overnight at 4 °C in a humidified chamber. Cells were washed with PBST and incubated with a AREX® Fluor 488 -conjugated secondary antibody (green) in PBS at room temperature in the dark.

STORAGE

Store at 4°C short term. For long term storage, store at -20°C, avoiding freeze/thaw cycles.

NOTE

For Research Use Only. Not for diagnostic, therapeutics, prophylactic or in vivo use.