

DATASHEET

ALAS-E Rabbit Polyclonal Antibody

CAT. NO. APA14546

KEY FEATURES

| | | | |
|---------------|---|---------------|--------------------|
| Target | ALAS-E | Source / Host | Rabbit |
| Reactivity | Human, Mouse, Rat | Clonality | Polyclonal |
| Applications | WB | Conjugation | Unconjugated |
| Form / Buffer | Liquid in 0.42% Potassium phosphate, 0.87% Sodium chloride, pH 7.3, 30% glycerol, and 0.01% sodium azide. | | Storage at-20°C |

BACKGROUND

Catalyzes the pyridoxal 5'-phosphate (PLP)-dependent condensation of succinyl-CoA and glycine to form aminolevulinic acid (ALA), with CoA and CO₂ as by-products -dependent condensation of succinyl-CoA and glycine to form aminolevulinic acid (ALA), with CoA and CO₂ as by-products . Contributes significantly to heme formation during erythropoiesis .

APPLICATION

To ensure optimal assay performance, AREX recommends conducting reagent titration tailored to each testing system for optimal detection results.

| | |
|----|----------------|
| WB | 1:500 - 1:1000 |
|----|----------------|

*Results are sample-specific. Please refer to your local assay conditions and test parameters for reference.

PRODUCT OVERVIEW

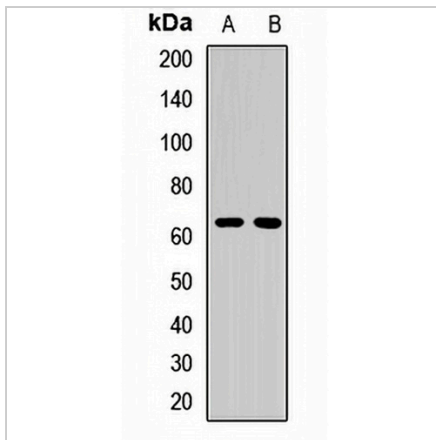
| | |
|-------------------|--|
| Description | Rabbit polyclonal antibody to ALAS-E |
| Specificity | Recognizes endogenous levels of ALAS-E protein. |
| Antibody Type | Primary antibody |
| Immunogen | Recombinant fusion protein of human ALAS-E |
| Purification | The antibody was purified by immunogen affinity chromatography. |
| Molecular Weight | Predicted: 49; Observed: 63 kD |
| Form/Buffer | Liquid in 0.42% Potassium phosphate, 0.87% Sodium chloride, pH 7.3, 30% glycerol, and 0.01% sodium azide. |
| Alternative Names | ALASE; ASB; 5-aminolevulinate synthase, erythroid-specific mitochondrial; ALAS-E; 5-aminolevulinic acid synthase 2; Delta-ALA synthase 2; Delta-aminolevulinate synthase 2 |
| Gene Symbol | ALAS2 |
| Entrez Gene | 212(Human); 11656(Mouse); 25748(Rat) |
| SwissProt | P22557(Human); P08680(Mouse); Q63147(Rat) |

*AREX continuously optimizes our products. Webpage content may not reflect the latest updates. For inquiries, please contact info@arexbio.com or your local distributor.

*Clone Number, Reactivity, Source/Host and Clonality can be found in the product name and Key Features section above.

DATASHEET**ALAS-E Rabbit Polyclonal Antibody**

CAT. NO. APA14546

DATA

Western blot analysis of ALAS-E expression in HEK293T (A), mouse lung (B) whole cell lysates. (Predicted band size: 49; 60; 63; 64 kD; Observed band size: 63 kD)

STORAGE

Store at 4°C short term. For long term storage, store at -20°C, avoiding freeze/thaw cycles.

NOTE

For Research Use Only. Not for diagnostic, therapeutics, prophylactic or in vivo use.