

DATASHEET

MISR2 Rabbit Polyclonal Antibody

CAT. NO. APA14547

KEY FEATURES

Target	MISR2	Source / Host	Rabbit
Reactivity	Human, Mouse, Rat	Clonality	Polyclonal
Applications	WB	Conjugation	Unconjugated
Form / Buffer	Liquid in 0.42% Potassium phosphate, 0.87% Sodium chloride, pH 7.3, 30% glycerol, and 0.01% sodium azide.		Storage at -20°C

BACKGROUND

On ligand binding, forms a receptor complex consisting of two type II and two type I transmembrane serine/threonine kinases. Type II receptors phosphorylate and activate type I receptors which autophosphorylate, then bind and activate SMAD transcriptional regulators. Receptor for anti-Muellerian hormone.

APPLICATION

To ensure optimal assay performance, AREX recommends conducting reagent titration tailored to each testing system for optimal detection results.

WB	1:500 - 1:2000
----	----------------

*Results are sample-specific. Please refer to your local assay conditions and test parameters for reference.

PRODUCT OVERVIEW

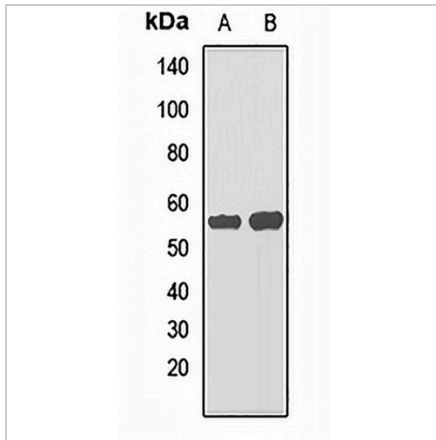
Description	Rabbit polyclonal antibody to MISR2
Specificity	Recognizes endogenous levels of MISR2 protein.
Antibody Type	Primary antibody
Immunogen	Recombinant fusion protein of human MISR2
Purification	The antibody was purified by immunogen affinity chromatography.
Molecular Weight	Predicted: 62 kD; Observed: 55 kD
Form/Buffer	Liquid in 0.42% Potassium phosphate, 0.87% Sodium chloride, pH 7.3, 30% glycerol, and 0.01% sodium azide.
Alternative Names	AMHR; MISR2; Anti-Muellerian hormone type-2 receptor; Anti-Muellerian hormone type II receptor; AMH type II receptor; MIS type II receptor; MISRII; MRII
Gene Symbol	AMHR2
Entrez Gene	269(Human); 110542(Mouse); 29530(Rat)
SwissProt	Q16671(Human); Q8K592(Mouse); Q62893(Rat)

*AREX continuously optimizes our products. Webpage content may not reflect the latest updates. For inquiries, please contact info@arexbio.com or your local distributor.

*Clone Number, Reactivity, Source/Host and Clonality can be found in the product name and Key Features section above.

DATASHEET**MISR2 Rabbit Polyclonal Antibody**

CAT. NO. APA14547

DATA

Western blot analysis of MISR2 expression in mouse lung (A), rat kidney (B) whole cell lysates. (Predicted band size: 62 kD; Observed band size: 55 kD)

STORAGE

Store at 4°C short term. For long term storage, store at -20°C, avoiding freeze/thaw cycles.

NOTE

For Research Use Only. Not for diagnostic, therapeutics, prophylactic or in vivo use.