

**DATASHEET**

**CRHBP Rabbit Polyclonal Antibody**

CAT. NO. APA14554

**KEY FEATURES**

Target	CRHBP	Source / Host	Rabbit
Reactivity	Human	Clonality	Polyclonal
Applications	WB	Conjugation	Unconjugated
Form / Buffer	Liquid in 0.42% Potassium phosphate, 0.87% Sodium chloride, pH 7.3, 30% glycerol, and 0.01% sodium azide.		Storage at -20°C

**BACKGROUND**

Binds CRF and inactivates it. May prevent inappropriate pituitary-adrenal stimulation in pregnancy.

**APPLICATION**

To ensure optimal assay performance, AREX recommends conducting reagent titration tailored to each testing system for optimal detection results.

WB	1:500 - 1:1000
----	----------------

\*Results are sample-specific. Please refer to your local assay conditions and test parameters for reference.

**PRODUCT OVERVIEW**

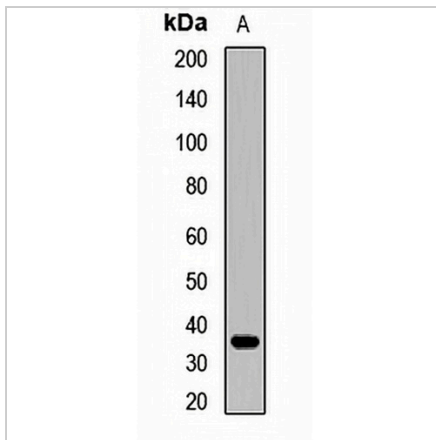
Description	Rabbit polyclonal antibody to CRHBP
Specificity	Recognizes endogenous levels of CRHBP protein.
Antibody Type	Primary antibody
Immunogen	Recombinant fusion protein of human CRHBP
Purification	The antibody was purified by immunogen affinity chromatography.
Molecular Weight	Predicted: 36 kD; Observed: 36 kD
Form/Buffer	Liquid in 0.42% Potassium phosphate, 0.87% Sodium chloride, pH 7.3, 30% glycerol, and 0.01% sodium azide.
Alternative Names	CRFBP; Corticotropin-releasing factor-binding protein; CRF-BP; CRF-binding protein; Corticotropin-releasing hormone-binding protein; CRH-BP
Gene Symbol	CRHBP
Entrez Gene	1393(Human)
SwissProt	P24387(Human)

\*AREX continuously optimizes our products. Webpage content may not reflect the latest updates. For inquiries, please contact [info@arexbio.com](mailto:info@arexbio.com) or your local distributor.

\*Clone Number, Reactivity, Source/Host and Clonality can be found in the product name and Key Features section above.

**DATASHEET****CRHBP Rabbit Polyclonal Antibody**

CAT. NO. APA14554

**DATA**

Western blot analysis of CRHBP expression in rat brain (A) whole cell lysates. (Predicted band size: 36 kD; Observed band size: 36 kD)

**STORAGE**

Store at 4°C short term. For long term storage, store at -20°C, avoiding freeze/thaw cycles.

**NOTE**

For Research Use Only. Not for diagnostic, therapeutics, prophylactic or in vivo use.