

**DATASHEET**

**GABBR2 Rabbit Polyclonal Antibody**

CAT. NO. APA14557

**KEY FEATURES**

Target	GABBR2	Source / Host	Rabbit
Reactivity	Human, Mouse, Rat	Clonality	Polyclonal
Applications	WB	Conjugation	Unconjugated
Form / Buffer	Liquid in 0.42% Potassium phosphate, 0.87% Sodium chloride, pH 7.3, 30% glycerol, and 0.01% sodium azide.		Storage at-20°C

**BACKGROUND**

Component of a heterodimeric G-protein coupled receptor for GABA, formed by GABBR1 and GABBR2 . Within the heterodimeric GABA receptor, only GABBR1 seems to bind agonists, while GABBR2 mediates coupling to G proteins . Ligand binding causes a conformation change that triggers signaling via guanine nucleotide-binding proteins (G proteins) and modulates the activity of down-stream effectors, such as adenylate cyclase . Signaling inhibits adenylate cyclase, stimulates phospholipase A2, activates potassium channels, inactivates voltage-dependent calcium-channels and modulates inositol phospholipid hydrolysis . Plays a critical role in the fine-tuning of inhibitory synaptic transmission .

**APPLICATION**

To ensure optimal assay performance, AREX recommends conducting reagent titration tailored to each testing system for optimal detection results.

WB	1:500 - 1:2000
----	----------------

\*Results are sample-specific. Please refer to your local assay conditions and test parameters for reference.

**PRODUCT OVERVIEW**

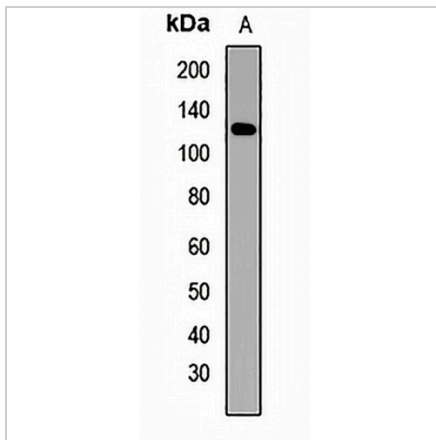
Description	Rabbit polyclonal antibody to GABBR2
Specificity	Recognizes endogenous levels of GABBR2 protein.
Antibody Type	Primary antibody
Immunogen	Recombinant fusion protein of human GABBR2
Purification	The antibody was purified by immunogen affinity chromatography.
Molecular Weight	Predicted: 105 kD; Observed: 122 kD
Form/Buffer	Liquid in 0.42% Potassium phosphate, 0.87% Sodium chloride, pH 7.3, 30% glycerol, and 0.01% sodium azide.
Alternative Names	GPR51; GPRC3B; Gamma-aminobutyric acid type B receptor subunit 2; GABA-B receptor 2; GABA-B-R2; GABA-BR2; GABABR2; Gb2; G-protein coupled receptor 51; HG20
Gene Symbol	GABBR2
Entrez Gene	9568(Human); 242425(Mouse); 83633(Rat)
SwissProt	O75899(Human); Q80T41(Mouse); O88871(Rat)

\*AREX continuously optimizes our products. Webpage content may not reflect the latest updates. For inquiries, please contact [info@arexbio.com](mailto:info@arexbio.com) or your local distributor.

\*Clone Number, Reactivity, Source/Host and Clonality can be found in the product name and Key Features section above.

**DATASHEET****GABBR2 Rabbit Polyclonal Antibody**

CAT. NO. APA14557

**DATA**

Western blot analysis of GABBR2 expression in MCF7 (A) whole cell lysates. (Predicted band size: 105 kD; Observed band size: 122 kD)

**STORAGE**

Store at 4°C short term. For long term storage, store at -20°C, avoiding freeze/thaw cycles.

**NOTE**

For Research Use Only. Not for diagnostic, therapeutics, prophylactic or in vivo use.