

DATASHEET

SLM2 Rabbit Polyclonal Antibody

CAT. NO. APA14560

KEY FEATURES

Target	SLM2	Source / Host	Rabbit
Reactivity	Human, Mouse, Rat	Clonality	Polyclonal
Applications	WB, IF/ICC	Conjugation	Unconjugated
Form / Buffer	Liquid in 0.42% Potassium phosphate, 0.87% Sodium chloride, pH 7.3, 30% glycerol, and 0.01% sodium azide.		Storage at -20°C

BACKGROUND

RNA-binding protein that plays a role in the regulation of alternative splicing and influences mRNA splice site selection and exon inclusion. Binds preferentially to the 5'-[AU]UAAA-3' motif in vitro. Binds optimally to RNA containing 5'-[AU]UAA-3' as a bipartite motif spaced by more than 15 nucleotides. Binds poly(A). RNA-binding abilities are down-regulated by tyrosine kinase PTK6 . RNA-binding abilities are down-regulated by tyrosine kinase PTK6 . Involved in splice site selection of vascular endothelial growth factor . In vitro regulates CD44 alternative splicing by direct binding to purine-rich exonic enhancer .

APPLICATION

To ensure optimal assay performance, AREX recommends conducting reagent titration tailored to each testing system for optimal detection results.

WB	1:500 - 1:2000
IF/ICC	1:50 - 1:200

*Results are sample-specific. Please refer to your local assay conditions and test parameters for reference.

PRODUCT OVERVIEW

Description	Rabbit polyclonal antibody to SLM2
Specificity	Recognizes endogenous levels of SLM2 protein.
Antibody Type	Primary antibody
Immunogen	Recombinant fusion protein of human SLM2
Purification	The antibody was purified by immunogen affinity chromatography.
Molecular Weight	Predicted: 38 kD; Observed: 38 kD
Form/Buffer	Liquid in 0.42% Potassium phosphate, 0.87% Sodium chloride, pH 7.3, 30% glycerol, and 0.01% sodium azide.
Alternative Names	SALP; SLM2; KH domain-containing, RNA-binding, signal transduction-associated protein 3; RNA-binding protein T-Star; Sam68-like mammalian protein 2; SLM-2; Sam68-like phosphotyrosine protein
Gene Symbol	KHDRBS3
Entrez Gene	10656(Human); 13992(Mouse)
SwissProt	O75525(Human); Q9R226(Mouse)

*AREX continuously optimizes our products. Webpage content may not reflect the latest updates. For inquiries, please contact info@arexbio.com or your local distributor.

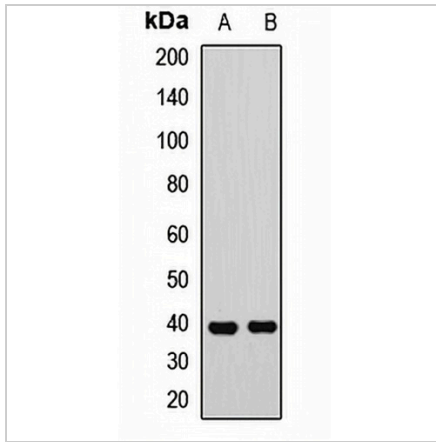
*Clone Number, Reactivity, Source/Host and Clonality can be found in the product name and Key Features section above.

DATASHEET

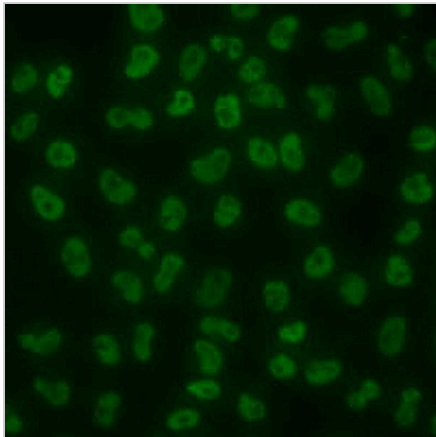
SLM2 Rabbit Polyclonal Antibody

CAT. NO. APA14560

DATA



Western blot analysis of SLM2 expression in HepG2 (A), Jurkat (B) whole cell lysates. (Predicted band size: 38 kD; Observed band size: 38 kD)



Immunofluorescent analysis of SLM2 staining in MCF7 cells. Formalin-fixed cells were permeabilized with 0.1% Triton X-100 in TBS for 5-10 minutes and blocked with 3% BSA-PBS for 30 minutes at room temperature. Cells were probed with the primary antibody in 3% BSA-PBS and incubated overnight at 4 °C in a humidified chamber. Cells were washed with PBST and incubated with a AREX® Fluor 488 -conjugated secondary antibody (green) in PBS at room temperature in the dark. DAPI was used to stain the cell nuclei (blue).

STORAGE

Store at 4°C short term. For long term storage, store at -20°C, avoiding freeze/thaw cycles.

NOTE

For Research Use Only. Not for diagnostic, therapeutics, prophylactic or in vivo use.