

DATASHEET

Pannexin-1 Rabbit Polyclonal Antibody

CAT. NO. APA14563

KEY FEATURES

| | | | |
|---------------|---|---------------|---------------------|
| Target | Pannexin-1 | Source / Host | Rabbit |
| Reactivity | Human, Mouse, Rat | Clonality | Polyclonal |
| Applications | WB | Conjugation | Unconjugated |
| Form / Buffer | Liquid in 0.42% Potassium phosphate, 0.87% Sodium chloride, pH 7.3, 30% glycerol, and 0.01% sodium azide. | | Storage at -20°C |

BACKGROUND

Ion channel involved in a variety of physiological functions such as blood pressure regulation, apoptotic cell clearance and oogenesis . Forms anion-selective channels with relatively low conductance and an order of permeabilities: nitrate>iodide>chloride>>aspartate=glutamate=gluconate . Can release ATP upon activation through phosphorylation or cleavage at C-terminus . May play a role as a Ca(2+)-leak channel to regulate ER Ca(2+) homeostasis .

APPLICATION

To ensure optimal assay performance, AREX recommends conducting reagent titration tailored to each testing system for optimal detection results.

| | |
|----|----------------|
| WB | 1:500 - 1:1000 |
|----|----------------|

*Results are sample-specific. Please refer to your local assay conditions and test parameters for reference.

PRODUCT OVERVIEW

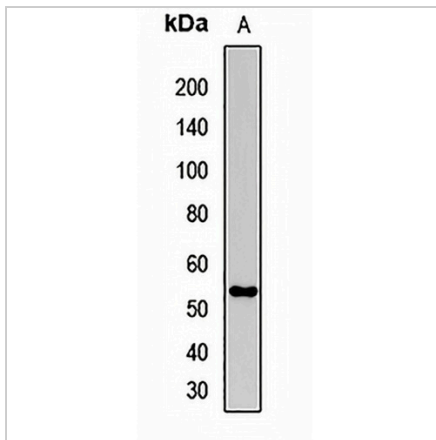
| | |
|-------------------|---|
| Description | Rabbit polyclonal antibody to Pannexin-1 |
| Specificity | Recognizes endogenous levels of Pannexin-1 protein. |
| Antibody Type | Primary antibody |
| Immunogen | Recombinant fusion protein of human Pannexin-1 |
| Purification | The antibody was purified by immunogen affinity chromatography. |
| Molecular Weight | Predicted: 47; Observed: 54 kD |
| Form/Buffer | Liquid in 0.42% Potassium phosphate, 0.87% Sodium chloride, pH 7.3, 30% glycerol, and 0.01% sodium azide. |
| Alternative Names | MRS1; Pannexin-1 |
| Gene Symbol | PANX1 |
| Entrez Gene | 24145(Human); 55991(Mouse); 315435(Rat) |
| SwissProt | Q96RD7(Human); Q9JIP4(Mouse); P60570(Rat) |

*AREX continuously optimizes our products. Webpage content may not reflect the latest updates. For inquiries, please contact info@arexbio.com or your local distributor.

*Clone Number, Reactivity, Source/Host and Clonality can be found in the product name and Key Features section above.

DATASHEET**Pannexin-1 Rabbit Polyclonal Antibody**

CAT. NO. APA14563

DATA

Western blot analysis of Pannexin-1 expression in mouse brain (A) whole cell lysates.
(Predicted band size: 47; 48 kD; Observed band size: 54 kD)

STORAGE

Store at 4°C short term. For long term storage, store at -20°C, avoiding freeze/thaw cycles.

NOTE

For Research Use Only. Not for diagnostic, therapeutics, prophylactic or in vivo use.