

**DATASHEET**

**NPT2 Rabbit Polyclonal Antibody**

CAT. NO. APA14566

**KEY FEATURES**

Target	NPT2	Source / Host	Rabbit
Reactivity	Human, Mouse, Rat	Clonality	Polyclonal
Applications	WB, IF/ICC	Conjugation	Unconjugated
Form / Buffer	Liquid in 0.42% Potassium phosphate, 0.87% Sodium chloride, pH 7.3, 30% glycerol, and 0.01% sodium azide.		Storage at-20°C

**BACKGROUND**

Involved in actively transporting phosphate into cells via Na<sup>(+)</sup> cotransport in the renal brush border membrane cotransport in the renal brush border membrane . The cotransport has a Na<sup>(+)</sup>:Pi stoichiometry of 3:1 and is electrogenic .

**APPLICATION**

To ensure optimal assay performance, AREX recommends conducting reagent titration tailored to each testing system for optimal detection results.

WB	1:500 - 1:2000
IF/ICC	1:50 - 1:200

\*Results are sample-specific. Please refer to your local assay conditions and test parameters for reference.

**PRODUCT OVERVIEW**

Description	Rabbit polyclonal antibody to NPT2
Specificity	Recognizes endogenous levels of NPT2 protein.
Antibody Type	Primary antibody
Immunogen	Recombinant fusion protein of human NPT2
Purification	The antibody was purified by immunogen affinity chromatography.
Molecular Weight	Predicted: 68 kD; Observed: 68 kD
Form/Buffer	Liquid in 0.42% Potassium phosphate, 0.87% Sodium chloride, pH 7.3, 30% glycerol, and 0.01% sodium azide.
Alternative Names	NPT2; SLC17A2; Sodium-dependent phosphate transport protein 2A; Sodium-phosphate transport protein 2A; Na <sup>(+)</sup> -dependent phosphate cotransporter 2A; NaPi-3; Sodium/phosphate cotransporter 2A; Na <sup>(+)</sup> /Pi cotransporter 2A; NaPi-2a; Solute carrier family 34 member 1
Gene Symbol	SLC34A1
Entrez Gene	6569(Human); 25548(Rat)
SwissProt	Q06495(Human); Q60825(Mouse); Q06496(Rat)

\*AREX continuously optimizes our products. Webpage content may not reflect the latest updates. For inquiries, please contact [info@arexbio.com](mailto:info@arexbio.com) or your local distributor.

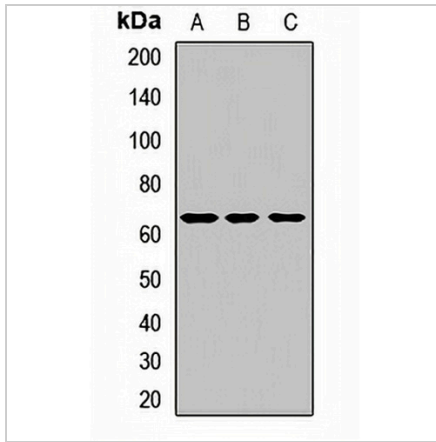
\*Clone Number, Reactivity, Source/Host and Clonality can be found in the product name and Key Features section above.

**DATASHEET**

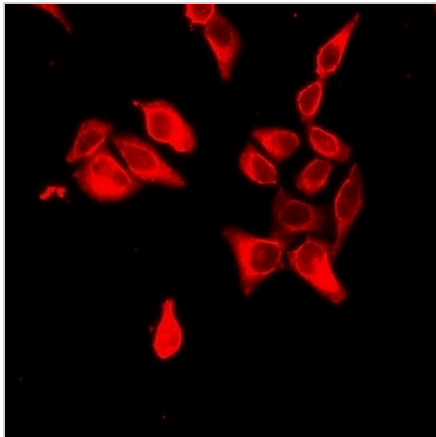
**NPT2 Rabbit Polyclonal Antibody**

CAT. NO. APA14566

**DATA**



Western blot analysis of NPT2 expression in A549 (A), mouse kidney (B), rat lung (C) whole cell lysates. (Predicted band size: 68 kD; Observed band size: 68 kD)



Immunofluorescent analysis of NPT2 staining in HeLa cells. Formalin-fixed cells were permeabilized with 0.1% Triton X-100 in TBS for 5-10 minutes and blocked with 3% BSA-PBS for 30 minutes at room temperature. Cells were probed with the primary antibody in 3% BSA-PBS and incubated overnight at 4 °C in a humidified chamber. Cells were washed with PBST and incubated with a DyLight 594-conjugated secondary antibody (red) in PBS at room temperature in the dark.

**STORAGE**

Store at 4°C short term. For long term storage, store at -20°C, avoiding freeze/thaw cycles.

**NOTE**

For Research Use Only. Not for diagnostic, therapeutics, prophylactic or in vivo use.