

DATASHEET

SPDEF Rabbit Polyclonal Antibody

CAT. NO. APA14567

KEY FEATURES

Target	SPDEF	Source / Host	Rabbit
Reactivity	Human, Rat	Clonality	Polyclonal
Applications	WB	Conjugation	Unconjugated
Form / Buffer	Liquid in 0.42% Potassium phosphate, 0.87% Sodium chloride, pH 7.3, 30% glycerol, and 0.01% sodium azide.		Storage at-20°C

BACKGROUND

May function as an androgen-independent transactivator of the prostate-specific antigen (PSA) promoter. Binds to 5'-GGAT-3' DNA sequences. May play a role in the regulation of the prostate gland and/or prostate cancer development. Acts as a transcriptional activator for SERPINB5 promoter.

APPLICATION

To ensure optimal assay performance, AREX recommends conducting reagent titration tailored to each testing system for optimal detection results.

WB	1:500 - 1:2000
----	----------------

*Results are sample-specific. Please refer to your local assay conditions and test parameters for reference.

PRODUCT OVERVIEW

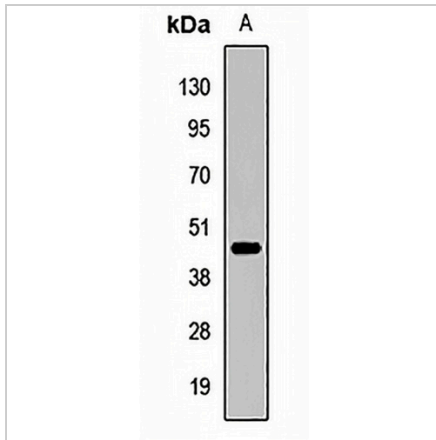
Description	Rabbit polyclonal antibody to SPDEF
Specificity	Recognizes endogenous levels of SPDEF protein.
Antibody Type	Primary antibody
Immunogen	Recombinant fusion protein of human SPDEF
Purification	The antibody was purified by immunogen affinity chromatography.
Molecular Weight	Predicted: 35; Observed: 45 kD
Form/Buffer	Liquid in 0.42% Potassium phosphate, 0.87% Sodium chloride, pH 7.3, 30% glycerol, and 0.01% sodium azide.
Alternative Names	PDEF; PSE; SAM pointed domain-containing Ets transcription factor; Prostate epithelium-specific Ets transcription factor; Prostate-specific Ets; Prostate-derived Ets factor
Gene Symbol	SPDEF
Entrez Gene	25803(Human)
SwissProt	O95238(Human)

*AREX continuously optimizes our products. Webpage content may not reflect the latest updates. For inquiries, please contact info@arexbio.com or your local distributor.

*Clone Number, Reactivity, Source/Host and Clonality can be found in the product name and Key Features section above.

DATASHEET**SPDEF Rabbit Polyclonal Antibody**

CAT. NO. APA14567

DATA

Western blot analysis of SPDEF expression in rat ovary (A) whole cell lysates. (Predicted band size: 35; 37 kD; Observed band size: 45 kD)

STORAGE

Store at 4°C short term. For long term storage, store at -20°C, avoiding freeze/thaw cycles.

NOTE

For Research Use Only. Not for diagnostic, therapeutics, prophylactic or in vivo use.