

DATASHEET

BCL9 Rabbit Polyclonal Antibody

CAT. NO. APA14571

KEY FEATURES

Target	BCL9	Source / Host	Rabbit
Reactivity	Human, Mouse	Clonality	Polyclonal
Applications	WB, IHC	Conjugation	Unconjugated
Form / Buffer	Liquid in 0.42% Potassium phosphate, 0.87% Sodium chloride, pH 7.3, 30% glycerol, and 0.01% sodium azide.		Storage at-20°C

BACKGROUND

Involved in signal transduction through the Wnt pathway. Promotes beta-catenin's transcriptional activity .

APPLICATION

To ensure optimal assay performance, AREX recommends conducting reagent titration tailored to each testing system for optimal detection results.

WB	1:500 - 1:2000
IHC	1:50 - 1:200

*Results are sample-specific. Please refer to your local assay conditions and test parameters for reference.

PRODUCT OVERVIEW

Description	Rabbit polyclonal antibody to BCL9
Specificity	Recognizes endogenous levels of BCL9 protein.
Antibody Type	Primary antibody
Immunogen	Recombinant fusion protein of human BCL9
Purification	The antibody was purified by immunogen affinity chromatography.
Molecular Weight	Predicted: 149 kD; Observed: 149 kD
Form/Buffer	Liquid in 0.42% Potassium phosphate, 0.87% Sodium chloride, pH 7.3, 30% glycerol, and 0.01% sodium azide.
Alternative Names	B-cell CLL/lymphoma 9 protein; B-cell lymphoma 9 protein; Bcl-9; Protein legless homolog
Gene Symbol	BCL9
Entrez Gene	607(Human); 77578(Mouse)
SwissProt	O00512(Human); Q9D219(Mouse)

*AREX continuously optimizes our products. Webpage content may not reflect the latest updates. For inquiries, please contact info@arexbio.com or your local distributor.

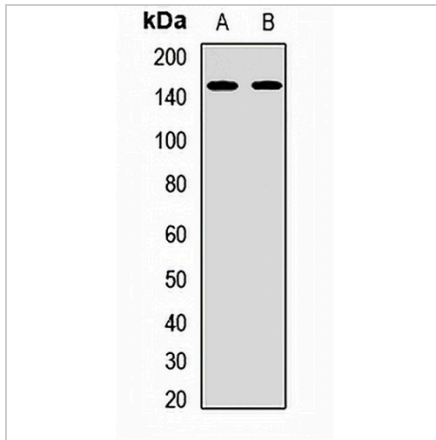
*Clone Number, Reactivity, Source/Host and Clonality can be found in the product name and Key Features section above.

DATASHEET

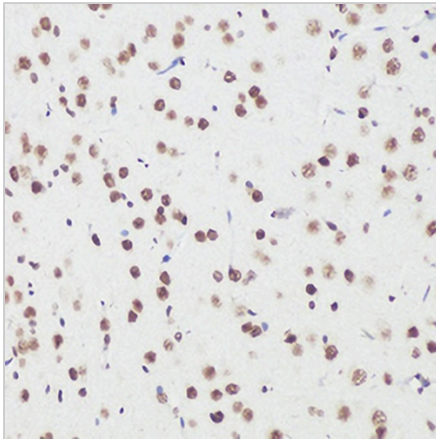
BCL9 Rabbit Polyclonal Antibody

CAT. NO. APA14571

DATA



Western blot analysis of BCL9 expression in MCF7 (A), mouse pancreas (B) whole cell lysates. (Predicted band size: 149 kD; Observed band size: 149 kD)



Immunohistochemical analysis of BCL9 staining in rat brain formalin fixed paraffin embedded tissue section. The section was pre-treated using heat mediated antigen retrieval with sodium citrate buffer (pH 6.0). The section was then incubated with the antibody at room temperature and detected using an HRP conjugated compact polymer system. DAB was used as the chromogen. The section was then counterstained with haematoxylin and mounted with DPX.

STORAGE

Store at 4°C short term. For long term storage, store at -20°C, avoiding freeze/thaw cycles.

NOTE

For Research Use Only. Not for diagnostic, therapeutics, prophylactic or in vivo use.