

DATASHEET

BRIP1 Rabbit Polyclonal Antibody

CAT. NO. APA14573

KEY FEATURES

Target	BRIP1	Source / Host	Rabbit
Reactivity	Human	Clonality	Polyclonal
Applications	WB	Conjugation	Unconjugated
Form / Buffer	Liquid in 0.42% Potassium phosphate, 0.87% Sodium chloride, pH 7.3, 30% glycerol, and 0.01% sodium azide.		Storage at-20°C

BACKGROUND

DNA-dependent ATPase and 5'-3' DNA helicase required for the maintenance of chromosomal stability . Acts late in the Fanconi anemia pathway, after FANCD2 ubiquitination . Involved in the repair of DNA double-strand breaks by homologous recombination in a manner that depends on its association with BRCA1 . Involved in the repair of abasic sites at replication forks by promoting the degradation of DNA-protein cross-links: acts by catalyzing unfolding of HMCES DNA-protein cross-link via its helicase activity, exposing the underlying DNA and enabling cleavage of the DNA-protein adduct by the SPRTN metalloprotease . Can unwind RNA:DNA substrates . Unwinds G-quadruplex DNA; unwinding requires a 5'-single stranded tail .

APPLICATION

To ensure optimal assay performance, AREX recommends conducting reagent titration tailored to each testing system for optimal detection results.

WB	1:500 - 1:2000
----	----------------

*Results are sample-specific. Please refer to your local assay conditions and test parameters for reference.

PRODUCT OVERVIEW

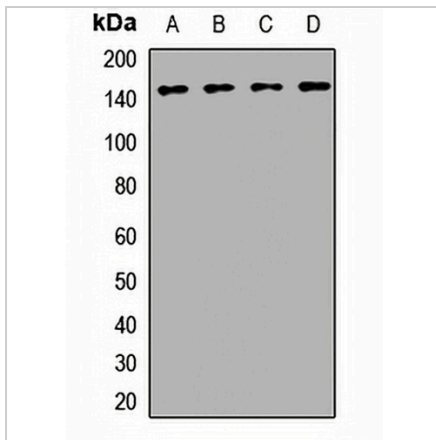
Description	Rabbit polyclonal antibody to BRIP1
Specificity	Recognizes endogenous levels of BRIP1 protein.
Antibody Type	Primary antibody
Immunogen	Recombinant fusion protein of human BRIP1
Purification	The antibody was purified by immunogen affinity chromatography.
Molecular Weight	Predicted: 112; Observed: 145 kD
Form/Buffer	Liquid in 0.42% Potassium phosphate, 0.87% Sodium chloride, pH 7.3, 30% glycerol, and 0.01% sodium azide.
Alternative Names	BACH1; FANCI; Fanconi anemia group J protein; Protein FACJ; ATP-dependent RNA helicase BRIP1; BRCA1-associated C-terminal helicase 1; BRCA1-interacting protein C-terminal helicase 1; BRCA1-interacting protein 1
Gene Symbol	BRIP1
Entrez Gene	83990(Human)
SwissProt	Q9BX63(Human)

*AREX continuously optimizes our products. Webpage content may not reflect the latest updates. For inquiries, please contact info@arexbio.com or your local distributor.

*Clone Number, Reactivity, Source/Host and Clonality can be found in the product name and Key Features section above.

DATASHEET**BRIP1 Rabbit Polyclonal Antibody**

CAT. NO. APA14573

DATA

Western blot analysis of BRIP1 expression in Hela (A), MCF7 (B), mouse brain (C), rat brain (D) whole cell lysates. (Predicted band size: 112; 140 kD; Observed band size: 145 kD)

STORAGE

Store at 4°C short term. For long term storage, store at -20°C, avoiding freeze/thaw cycles.

NOTE

For Research Use Only. Not for diagnostic, therapeutics, prophylactic or in vivo use.