

DATASHEET

FANCL Rabbit Polyclonal Antibody

CAT. NO. APA14574

KEY FEATURES

Target	FANCL	Source / Host	Rabbit
Reactivity	Human, Mouse	Clonality	Polyclonal
Applications	WB	Conjugation	Unconjugated
Form / Buffer	Liquid in 0.42% Potassium phosphate, 0.87% Sodium chloride, pH 7.3, 30% glycerol, and 0.01% sodium azide.		Storage at -20°C

BACKGROUND

Ubiquitin ligase protein that mediates monoubiquitination of FANCD2 in the presence of UBE2T, a key step in the DNA damage pathway. Also mediates monoubiquitination of FANCI. May stimulate the ubiquitin release from UBE2W. May be required for proper primordial germ cell proliferation in the embryonic stage, whereas it is probably not needed for spermatogonial proliferation after birth.

APPLICATION

To ensure optimal assay performance, AREX recommends conducting reagent titration tailored to each testing system for optimal detection results.

WB	1:500 - 1:1000
----	----------------

*Results are sample-specific. Please refer to your local assay conditions and test parameters for reference.

PRODUCT OVERVIEW

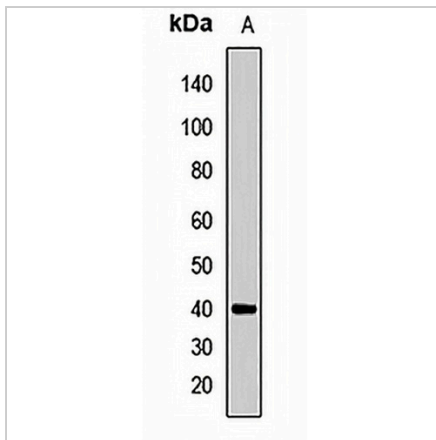
Description	Rabbit polyclonal antibody to FANCL
Specificity	Recognizes endogenous levels of FANCL protein.
Antibody Type	Primary antibody
Immunogen	Recombinant fusion protein of human FANCL
Purification	The antibody was purified by immunogen affinity chromatography.
Molecular Weight	Predicted: 42; Observed: 40 kD
Form/Buffer	Liquid in 0.42% Potassium phosphate, 0.87% Sodium chloride, pH 7.3, 30% glycerol, and 0.01% sodium azide.
Alternative Names	PHF9; E3 ubiquitin-protein ligase FANCL; Fanconi anemia group L protein; Fanconi anemia-associated polypeptide of 43 kDa; FAAP43
Gene Symbol	FANCL
Entrez Gene	55120(Human); 67030(Mouse)
SwissProt	Q9NW38(Human); Q9CR14(Mouse)

*AREX continuously optimizes our products. Webpage content may not reflect the latest updates. For inquiries, please contact info@arexbio.com or your local distributor.

*Clone Number, Reactivity, Source/Host and Clonality can be found in the product name and Key Features section above.

DATASHEET**FANCL Rabbit Polyclonal Antibody**

CAT. NO. APA14574

DATA

Western blot analysis of FANCL expression in mouse thymus (A) whole cell lysates.
(Predicted band size: 42; 43 kD; Observed band size: 40 kD)

STORAGE

Store at 4°C short term. For long term storage, store at -20°C, avoiding freeze/thaw cycles.

NOTE

For Research Use Only. Not for diagnostic, therapeutics, prophylactic or in vivo use.