

**DATASHEET**

**DNA Polymerase delta 2 Rabbit Polyclonal Antibody**

CAT. NO. APA14579

**KEY FEATURES**

Target	DNA Polymerase delta 2	Source / Host	Rabbit
Reactivity	Human, Mouse, Rat	Clonality	Polyclonal
Applications	WB	Conjugation	Unconjugated
Form / Buffer	Liquid in 0.42% Potassium phosphate, 0.87% Sodium chloride, pH 7.3, 30% glycerol, and 0.01% sodium azide.		Storage at -20°C

**BACKGROUND**

Accessory component of both the DNA polymerase delta complex and the DNA polymerase zeta complex. As a component of the trimeric and tetrameric DNA polymerase delta complexes (Pol-delta3 and Pol-delta4, respectively), plays a role in high fidelity genome replication, including in lagging strand synthesis, and repair. Pol-delta3 and Pol-delta4 are characterized by the absence or the presence of POLD4. They exhibit differences in catalytic activity. Most notably, Pol-delta3 shows higher proofreading activity than Pol-delta4.

**APPLICATION**

To ensure optimal assay performance, AREX recommends conducting reagent titration tailored to each testing system for optimal detection results.

WB	1:500 - 1:2000
----	----------------

\*Results are sample-specific. Please refer to your local assay conditions and test parameters for reference.

**PRODUCT OVERVIEW**

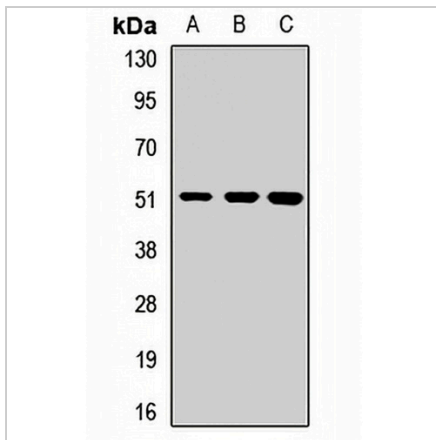
Description	Rabbit polyclonal antibody to DNA Polymerase delta 2
Specificity	Recognizes endogenous levels of DNA Polymerase delta 2 protein.
Antibody Type	Primary antibody
Immunogen	Recombinant fusion protein of human DNA Polymerase delta 2
Purification	The antibody was purified by immunogen affinity chromatography.
Molecular Weight	Predicted: 51 kD; Observed: 51 kD
Form/Buffer	Liquid in 0.42% Potassium phosphate, 0.87% Sodium chloride, pH 7.3, 30% glycerol, and 0.01% sodium azide.
Alternative Names	DNA polymerase delta subunit 2; DNA polymerase delta subunit p50
Gene Symbol	POLD2
Entrez Gene	5425(Human); 18972(Mouse); 289758(Rat)
SwissProt	P49005(Human); O35654(Mouse); Q6AXY4(Rat)

\*AREX continuously optimizes our products. Webpage content may not reflect the latest updates. For inquiries, please contact [info@arexbio.com](mailto:info@arexbio.com) or your local distributor.

\*Clone Number, Reactivity, Source/Host and Clonality can be found in the product name and Key Features section above.

**DATASHEET****DNA Polymerase delta 2 Rabbit Polyclonal Antibody**

CAT. NO. APA14579

**DATA**

Western blot analysis of DNA Polymerase delta 2 expression in HeLa (A), HepG2 (B), mouse testis (C) whole cell lysates. (Predicted band size: 51 kD; Observed band size: 51 kD)

**STORAGE**

Store at 4°C short term. For long term storage, store at -20°C, avoiding freeze/thaw cycles.

**NOTE**

For Research Use Only. Not for diagnostic, therapeutics, prophylactic or in vivo use.