

**DATASHEET**

**POLR2G Rabbit Polyclonal Antibody**

CAT. NO. APA14580

**KEY FEATURES**

Target	POLR2G	Source / Host	Rabbit
Reactivity	Human, Mouse, Rat	Clonality	Polyclonal
Applications	WB	Conjugation	Unconjugated
Form / Buffer	Liquid in 0.42% Potassium phosphate, 0.87% Sodium chloride, pH 7.3, 30% glycerol, and 0.01% sodium azide.		Storage at-20°C

**BACKGROUND**

Core component of RNA polymerase II (Pol II), a DNA-dependent RNA polymerase which synthesizes mRNA precursors and many functional non-coding RNAs using the four ribonucleoside triphosphates as substrates. Pol II is the central component of the basal RNA polymerase II transcription machinery. It is composed of mobile elements that move relative to each other. POLR2G/RPB7 is part of a subcomplex with POLR2D/RPB4 that binds to a pocket formed by POLR2A/RPB1, POLR2B/RPB2 and POLR2F/RPABC2 at the base of the clamp element. The POLR2D/RPB4-POLR2G/RPB7 subcomplex seems to lock the clamp via POLR2G/RPB7 in the closed conformation thus preventing double-stranded DNA to enter the active site cleft. The POLR2D/RPB4-POLR2G/RPB7 subcomplex binds single-stranded DNA and RNA.

**APPLICATION**

To ensure optimal assay performance, AREX recommends conducting reagent titration tailored to each testing system for optimal detection results.

WB	1:500 - 1:2000
----	----------------

\*Results are sample-specific. Please refer to your local assay conditions and test parameters for reference.

**PRODUCT OVERVIEW**

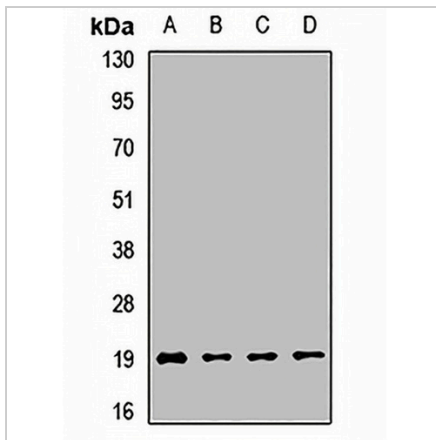
Description	Rabbit polyclonal antibody to POLR2G
Specificity	Recognizes endogenous levels of POLR2G protein.
Antibody Type	Primary antibody
Immunogen	Recombinant fusion protein of human POLR2G
Purification	The antibody was purified by immunogen affinity chromatography.
Molecular Weight	Predicted: 19 kD; Observed: 20 kD
Form/Buffer	Liquid in 0.42% Potassium phosphate, 0.87% Sodium chloride, pH 7.3, 30% glycerol, and 0.01% sodium azide.
Alternative Names	RPB7; DNA-directed RNA polymerase II subunit RPB7; RNA polymerase II subunit B7; DNA-directed RNA polymerase II subunit G; RNA polymerase II 19 kDa subunit; RPB19
Gene Symbol	POLR2G
Entrez Gene	5436(Human); 67710(Mouse); 117017(Rat)
SwissProt	P62487(Human); P62488(Mouse); P62489(Rat)

\*AREX continuously optimizes our products. Webpage content may not reflect the latest updates. For inquiries, please contact [info@arexbio.com](mailto:info@arexbio.com) or your local distributor.

\*Clone Number, Reactivity, Source/Host and Clonality can be found in the product name and Key Features section above.

**DATASHEET****POLR2G Rabbit Polyclonal Antibody**

CAT. NO. APA14580

**DATA**

Western blot analysis of POLR2G expression in MCF7 (A), A549 (B), mouse brain (C), rat brain (D) whole cell lysates. (Predicted band size: 19 kD; Observed band size: 20 kD)

**STORAGE**

Store at 4°C short term. For long term storage, store at -20°C, avoiding freeze/thaw cycles.

**NOTE**

For Research Use Only. Not for diagnostic, therapeutics, prophylactic or in vivo use.