

DATASHEET

WRN Rabbit Polyclonal Antibody

CAT. NO. APA14581

KEY FEATURES

Target	WRN	Source / Host	Rabbit
Reactivity	Human	Clonality	Polyclonal
Applications	WB	Conjugation	Unconjugated
Form / Buffer	Liquid in 0.42% Potassium phosphate, 0.87% Sodium chloride, pH 7.3, 30% glycerol, and 0.01% sodium azide.		Storage at -20°C

BACKGROUND

Multifunctional enzyme that has magnesium and ATP-dependent 3'-5' DNA-helicase activity on partially duplex substrates . Also has 3'->5' exonuclease activity towards double-stranded (ds)DNA with a 5'-overhang . Has no nuclease activity towards single-stranded (ss)DNA or blunt-ended dsDNA . Helicase activity is most efficient with (d)ATP, but (d)CTP will substitute with reduced efficiency; strand displacement is enhanced by single-strand binding-protein (heterotrimeric replication protein A complex, RPA1, RPA2, RPA3) . Binds preferentially to DNA substrates containing alternate secondary structures, such as replication forks and Holliday junctions.

APPLICATION

To ensure optimal assay performance, AREX recommends conducting reagent titration tailored to each testing system for optimal detection results.

WB	1:500 - 1:2000
----	----------------

*Results are sample-specific. Please refer to your local assay conditions and test parameters for reference.

PRODUCT OVERVIEW

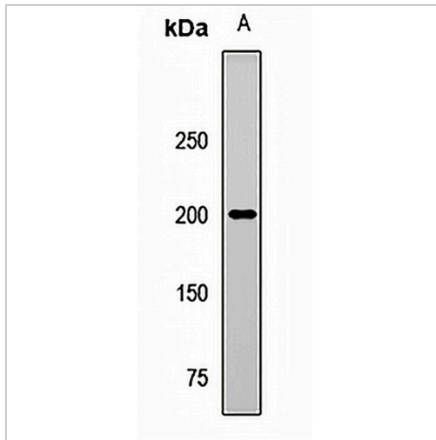
Description	Rabbit polyclonal antibody to WRN
Specificity	Recognizes endogenous levels of WRN protein.
Antibody Type	Primary antibody
Immunogen	Recombinant fusion protein of human WRN
Purification	The antibody was purified by immunogen affinity chromatography.
Molecular Weight	Predicted: 162 kD; Observed: 200 kD
Form/Buffer	Liquid in 0.42% Potassium phosphate, 0.87% Sodium chloride, pH 7.3, 30% glycerol, and 0.01% sodium azide.
Alternative Names	RECQ3; RECQL2; Werner syndrome ATP-dependent helicase; DNA helicase, RecQ-like type 3; RecQ3; Exonuclease WRN; RecQ protein-like 2
Gene Symbol	WRN
Entrez Gene	7486(Human)
SwissProt	Q14191(Human)

*AREX continuously optimizes our products. Webpage content may not reflect the latest updates. For inquiries, please contact info@arexbio.com or your local distributor.

*Clone Number, Reactivity, Source/Host and Clonality can be found in the product name and Key Features section above.

DATASHEET**WRN Rabbit Polyclonal Antibody**

CAT. NO. APA14581

DATA

Western blot analysis of WRN expression in K562 (A) whole cell lysates. (Predicted band size: 162 kD; Observed band size: 200 kD)

STORAGE

Store at 4°C short term. For long term storage, store at -20°C, avoiding freeze/thaw cycles.

NOTE

For Research Use Only. Not for diagnostic, therapeutics, prophylactic or in vivo use.