

DATASHEET

15-LO Rabbit Polyclonal Antibody

CAT. NO. APA14583

KEY FEATURES

Target	15-LO	Source / Host	Rabbit
Reactivity	Human, Mouse, Rat	Clonality	Polyclonal
Applications	WB, IHC	Conjugation	Unconjugated
Form / Buffer	Liquid in 0.42% Potassium phosphate, 0.87% Sodium chloride, pH 7.3, 30% glycerol, and 0.01% sodium azide.		Storage at -20°C

BACKGROUND

Non-heme iron-containing dioxygenase that catalyzes the stereo-specific peroxidation of free and esterified polyunsaturated fatty acids generating a spectrum of bioactive lipid mediators . It inserts peroxy groups at C12 or C15 of arachidonate ((5Z,8Z,11Z,14Z)-eicosatetraenoate) producing both 12-hydroperoxyeicosatetraenoate/12-HPETE and 15-hydroperoxyeicosatetraenoate/15-HPETE . It may then act on 12-HPETE to produce hepoxilins, which may show pro-inflammatory properties . Can also peroxidize linoleate ((9Z,12Z)-octadecadienoate) to 13-hydroperoxyoctadecadienoate/13-HPODE .

APPLICATION

To ensure optimal assay performance, AREX recommends conducting reagent titration tailored to each testing system for optimal detection results.

WB	1:500 - 1:2000
IHC	1:50 - 1:200

*Results are sample-specific. Please refer to your local assay conditions and test parameters for reference.

PRODUCT OVERVIEW

Description	Rabbit polyclonal antibody to 15-LO
Specificity	Recognizes endogenous levels of 15-LO protein.
Antibody Type	Primary antibody
Immunogen	Recombinant fusion protein of human 15-LO
Purification	The antibody was purified by immunogen affinity chromatography.
Molecular Weight	Predicted: 74 kD; Observed: 70 kD
Form/Buffer	Liquid in 0.42% Potassium phosphate, 0.87% Sodium chloride, pH 7.3, 30% glycerol, and 0.01% sodium azide.
Alternative Names	LOG15; Arachidonate 15-lipoxygenase; 15-LOX; 15-LOX-1; 12/15-lipoxygenase; Arachidonate 12-lipoxygenase, leukocyte-type; 12-LOX; Arachidonate omega-6 lipoxygenase
Gene Symbol	ALOX15
Entrez Gene	246(Human); 11687(Mouse); 81639(Rat)
SwissProt	P16050(Human); P39654(Mouse); Q02759(Rat)

*AREX continuously optimizes our products. Webpage content may not reflect the latest updates. For inquiries, please contact info@arexbio.com or your local distributor.

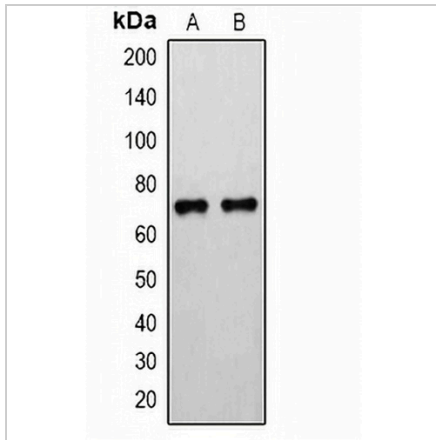
*Clone Number, Reactivity, Source/Host and Clonality can be found in the product name and Key Features section above.

DATASHEET

15-LO Rabbit Polyclonal Antibody

CAT. NO. APA14583

DATA



Western blot analysis of 15-LO expression in COS7 (A), mouse heart (B) whole cell lysates. (Predicted band size: 74 kD; Observed band size: 70 kD)

Data 2

Immunohistochemical analysis of 15-LO staining in human lung cancer formalin fixed paraffin embedded tissue section. The section was pre-treated using heat mediated antigen retrieval with sodium citrate buffer (pH 6.0). The section was then incubated with the antibody at room temperature and detected using an HRP conjugated compact polymer system. DAB was used as the chromogen. The section was then counterstained with haematoxylin and mounted with DPX.

STORAGE

Store at 4°C short term. For long term storage, store at -20°C, avoiding freeze/thaw cycles.

NOTE

For Research Use Only. Not for diagnostic, therapeutics, prophylactic or in vivo use.