

**DATASHEET**

**LSS Rabbit Polyclonal Antibody**

CAT. NO. APA14595

**KEY FEATURES**

Target	LSS	Source / Host	Rabbit
Reactivity	Human, Mouse, Rat	Clonality	Polyclonal
Applications	WB	Conjugation	Unconjugated
Form / Buffer	Liquid in 0.42% Potassium phosphate, 0.87% Sodium chloride, pH 7.3, 30% glycerol, and 0.01% sodium azide.		Storage at-20°C

**BACKGROUND**

Key enzyme in the cholesterol biosynthesis pathway. Catalyzes the cyclization of (S)-2,3 oxidosqualene to lanosterol, a reaction that forms the sterol nucleus -2,3 oxidosqualene to lanosterol, a reaction that forms the sterol nucleus . Through the production of lanosterol may regulate lens protein aggregation and increase transparency .

**APPLICATION**

To ensure optimal assay performance, AREX recommends conducting reagent titration tailored to each testing system for optimal detection results.

WB	1:500 - 1:2000
----	----------------

\*Results are sample-specific. Please refer to your local assay conditions and test parameters for reference.

**PRODUCT OVERVIEW**

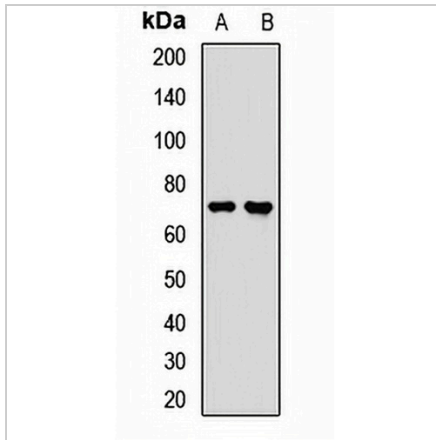
Description	Rabbit polyclonal antibody to LSS
Specificity	Recognizes endogenous levels of LSS protein.
Antibody Type	Primary antibody
Immunogen	Recombinant fusion protein of human LSS
Purification	The antibody was purified by immunogen affinity chromatography.
Molecular Weight	Predicted: 83 kD; Observed: 75 kD
Form/Buffer	Liquid in 0.42% Potassium phosphate, 0.87% Sodium chloride, pH 7.3, 30% glycerol, and 0.01% sodium azide.
Alternative Names	OSC; Lanosterol synthase; 2,3-epoxysqualene--lanosterol cyclase; Oxidosqualene--lanosterol cyclase; OSC; hOSC
Gene Symbol	LSS
Entrez Gene	4047(Human); 16987(Mouse); 81681(Rat)
SwissProt	P48449(Human); Q8BLN5(Mouse); P48450(Rat)

\*AREX continuously optimizes our products. Webpage content may not reflect the latest updates. For inquiries, please contact [info@arexbio.com](mailto:info@arexbio.com) or your local distributor.

\*Clone Number, Reactivity, Source/Host and Clonality can be found in the product name and Key Features section above.

**DATASHEET****LSS Rabbit Polyclonal Antibody**

CAT. NO. APA14595

**DATA**

Western blot analysis of LSS expression in BT474 (A), mouse lung (B) whole cell lysates.  
(Predicted band size: 83 kD; Observed band size: 75 kD)

**STORAGE**

Store at 4°C short term. For long term storage, store at -20°C, avoiding freeze/thaw cycles.

**NOTE**

For Research Use Only. Not for diagnostic, therapeutics, prophylactic or in vivo use.