

**DATASHEET**

**PEG1 Rabbit Polyclonal Antibody**

CAT. NO. APA14596

**KEY FEATURES**

Target	PEG1	Source / Host	Rabbit
Reactivity	Human, Mouse, Rat	Clonality	Polyclonal
Applications	WB, IF/ICC	Conjugation	Unconjugated
Form / Buffer	Liquid in 0.42% Potassium phosphate, 0.87% Sodium chloride, pH 7.3, 30% glycerol, and 0.01% sodium azide.		Storage at -20°C

**BACKGROUND**

Plays an important role in enabling neurons to transition from bipolar to multipolar shapes, a process essential for their correct migration toward the cortical plate during brain development. This function is likely achieved through the regulation of N-cadherin-dependent cell adhesion and the modulation of Akt and canonical Wnt signaling pathways. Essential for the development and maintenance of meso-diencephalic dopaminergic (mdDA) neurons during development. Negatively regulates the canonical Wnt signaling pathway during adipogenic differentiation by reducing the glycosylation, maturation, and cell membrane localization of the Wnt coreceptor LRP6.

**APPLICATION**

To ensure optimal assay performance, AREX recommends conducting reagent titration tailored to each testing system for optimal detection results.

WB	1:500 - 1:2000
IF/ICC	1:50 - 1:200

\*Results are sample-specific. Please refer to your local assay conditions and test parameters for reference.

**PRODUCT OVERVIEW**

Description	Rabbit polyclonal antibody to PEG1
Specificity	Recognizes endogenous levels of PEG1 protein.
Antibody Type	Primary antibody
Immunogen	Recombinant fusion protein of human PEG1
Purification	The antibody was purified by immunogen affinity chromatography.
Molecular Weight	Predicted: 38 kD; Observed: 39 kD
Form/Buffer	Liquid in 0.42% Potassium phosphate, 0.87% Sodium chloride, pH 7.3, 30% glycerol, and 0.01% sodium azide.
Alternative Names	PEG1; Mesoderm-specific transcript homolog protein; Paternally-expressed gene 1 protein
Gene Symbol	MEST
Entrez Gene	4232(Human); 17294(Mouse); 58827(Rat)
SwissProt	Q5EB52(Human); Q07646(Mouse); Q6P5P5(Rat)

\*AREX continuously optimizes our products. Webpage content may not reflect the latest updates. For inquiries, please contact [info@arexbio.com](mailto:info@arexbio.com) or your local distributor.

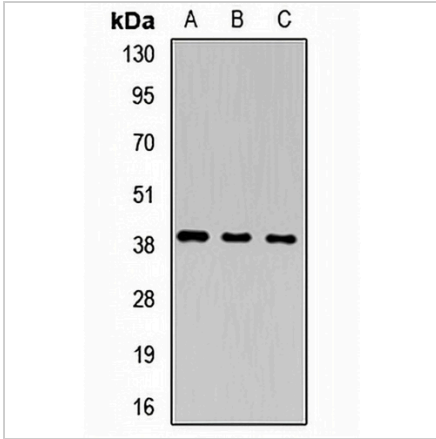
\*Clone Number, Reactivity, Source/Host and Clonality can be found in the product name and Key Features section above.

**DATASHEET**

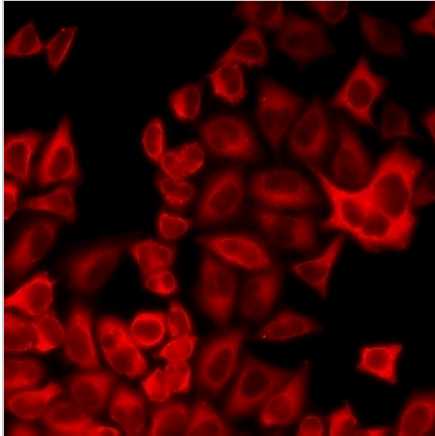
**PEG1 Rabbit Polyclonal Antibody**

CAT. NO. APA14596

**DATA**



Western blot analysis of PEG1 expression in MCF7 (A), HT29 (B), mouse testis (C) whole cell lysates. (Predicted band size: 38 kD; Observed band size: 39 kD)



Immunofluorescent analysis of PEG1 staining in U2OS cells. Formalin-fixed cells were permeabilized with 0.1% Triton X-100 in TBS for 5-10 minutes and blocked with 3% BSA-PBS for 30 minutes at room temperature. Cells were probed with the primary antibody in 3% BSA-PBS and incubated overnight at 4 °C in a humidified chamber. Cells were washed with PBST and incubated with a DyLight 594-conjugated secondary antibody (red) in PBS at room temperature in the dark.

**STORAGE**

Store at 4°C short term. For long term storage, store at -20°C, avoiding freeze/thaw cycles.

**NOTE**

For Research Use Only. Not for diagnostic, therapeutics, prophylactic or in vivo use.