

DATASHEET

ASCT2 Rabbit Polyclonal Antibody

CAT. NO. APA14602

KEY FEATURES

Target	ASCT2	Source / Host	Rabbit
Reactivity	Human, Mouse, Rat	Clonality	Polyclonal
Applications	WB	Conjugation	Unconjugated
Form / Buffer	Liquid in 0.42% Potassium phosphate, 0.87% Sodium chloride, pH 7.3, 30% glycerol, and 0.01% sodium azide.		Storage at -20°C

BACKGROUND

Sodium-coupled antiporter of neutral amino acids. In a tri-substrate transport cycle, exchanges neutral amino acids between the extracellular and intracellular compartments, coupled to the inward cotransport of at least one sodium ion . The preferred substrate is the essential amino acid L-glutamine, a precursor for biosynthesis of proteins, nucleotides and amine sugars as well as an alternative fuel for mitochondrial oxidative phosphorylation. Exchanges L-glutamine with other neutral amino acids such as L-serine, L-threonine and L-asparagine in a bidirectional way. Provides L-glutamine to proliferating stem and activated cells driving the metabolic switch toward cell differentiation . The transport cycle is usually pH-independent, with the exception of L-glutamate.

APPLICATION

To ensure optimal assay performance, AREX recommends conducting reagent titration tailored to each testing system for optimal detection results.

WB	1:500 - 1:2000
----	----------------

*Results are sample-specific. Please refer to your local assay conditions and test parameters for reference.

PRODUCT OVERVIEW

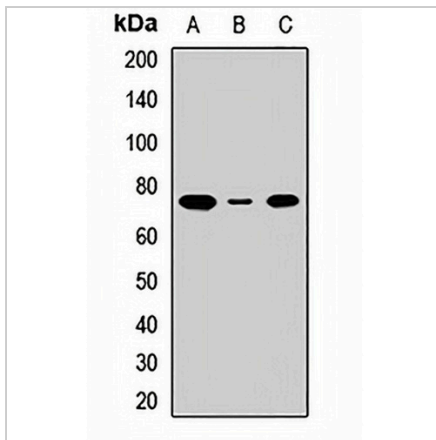
Description	Rabbit polyclonal antibody to ASCT2
Specificity	Recognizes endogenous levels of ASCT2 protein.
Antibody Type	Primary antibody
Immunogen	Recombinant fusion protein of human ASCT2
Purification	The antibody was purified by immunogen affinity chromatography.
Molecular Weight	Predicted: 33; Observed: 75 kD
Form/Buffer	Liquid in 0.42% Potassium phosphate, 0.87% Sodium chloride, pH 7.3, 30% glycerol, and 0.01% sodium azide.
Alternative Names	ASCT2; M7V1; RDR; RDRC; Neutral amino acid transporter B(0); ATB(0); Baboon M7 virus receptor; RD114/simian type D retrovirus receptor; Sodium-dependent neutral amino acid transporter type 2; Solute carrier family 1 member 5
Gene Symbol	SLC1A5
Entrez Gene	6510(Human)
SwissProt	Q15758(Human); P51912(Mouse)

*AREX continuously optimizes our products. Webpage content may not reflect the latest updates. For inquiries, please contact info@arexbio.com or your local distributor.

*Clone Number, Reactivity, Source/Host and Clonality can be found in the product name and Key Features section above.

DATASHEET**ASCT2 Rabbit Polyclonal Antibody**

CAT. NO. APA14602

DATA

Western blot analysis of ASCT2 expression in MCF7 (A), HeLa (B), mouse lung (C) whole cell lysates. (Predicted band size: 33; 36; 56 kD; Observed band size: 75 kD)

STORAGE

Store at 4°C short term. For long term storage, store at -20°C, avoiding freeze/thaw cycles.

NOTE

For Research Use Only. Not for diagnostic, therapeutics, prophylactic or in vivo use.