

DATASHEET

HAND2 Rabbit Polyclonal Antibody

CAT. NO. APA14613

KEY FEATURES

Target	HAND2	Source / Host	Rabbit
Reactivity	Human, Mouse, Rat	Clonality	Polyclonal
Applications	WB, IF/ICC	Conjugation	Unconjugated
Form / Buffer	Liquid in 0.42% Potassium phosphate, 0.87% Sodium chloride, pH 7.3, 30% glycerol, and 0.01% sodium azide.		Storage at -20°C

BACKGROUND

Essential for cardiac morphogenesis, particularly for the formation of the right ventricle and of the aortic arch arteries. Required for vascular development and regulation of angiogenesis, possibly through a VEGF signaling pathway. Also plays an important role in limb development, particularly in the establishment of anterior-posterior polarization, acting as an upstream regulator of sonic hedgehog (SHH) induction in the limb bud. Is involved in the development of branchial arches, which give rise to unique structures in the head and neck. Binds DNA on E-box consensus sequence 5'-CANNTG-3'.

APPLICATION

To ensure optimal assay performance, AREX recommends conducting reagent titration tailored to each testing system for optimal detection results.

WB	1:500 - 1:2000
IF/ICC	1:50 - 1:200

*Results are sample-specific. Please refer to your local assay conditions and test parameters for reference.

PRODUCT OVERVIEW

Description	Rabbit polyclonal antibody to HAND2
Specificity	Recognizes endogenous levels of HAND2 protein.
Antibody Type	Primary antibody
Immunogen	Recombinant fusion protein of human HAND2
Purification	The antibody was purified by immunogen affinity chromatography.
Molecular Weight	Predicted: 20; Observed: 23 kD
Form/Buffer	Liquid in 0.42% Potassium phosphate, 0.87% Sodium chloride, pH 7.3, 30% glycerol, and 0.01% sodium azide.
Alternative Names	BHLHA26; DHAND; Heart- and neural crest derivatives-expressed protein 2; Class A basic helix-loop-helix protein 26; bHLHa26; Deciduum, heart, autonomic nervous system and neural crest derivatives-expressed protein 2; dHAND
Gene Symbol	HAND2
Entrez Gene	9464(Human); 15111(Mouse); 64637(Rat)
SwissProt	P61296(Human); Q61039(Mouse); P61295(Rat)

*AREX continuously optimizes our products. Webpage content may not reflect the latest updates. For inquiries, please contact info@arexbio.com or your local distributor.

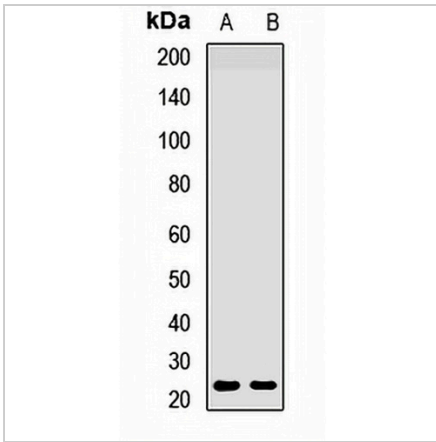
*Clone Number, Reactivity, Source/Host and Clonality can be found in the product name and Key Features section above.

DATASHEET

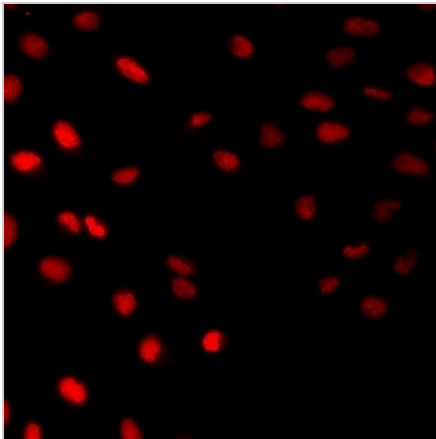
HAND2 Rabbit Polyclonal Antibody

CAT. NO. APA14613

DATA



Western blot analysis of HAND2 expression in mouse liver (A), mouse heart (B) whole cell lysates. (Predicted band size: 20; 23 kD; Observed band size: 23 kD)



Immunofluorescent analysis of HAND2 staining in A549 cells. Formalin-fixed cells were permeabilized with 0.1% Triton X-100 in TBS for 5-10 minutes and blocked with 3% BSA-PBS for 30 minutes at room temperature. Cells were probed with the primary antibody in 3% BSA-PBS and incubated overnight at 4 °C in a humidified chamber. Cells were washed with PBST and incubated with a DyLight 594-conjugated secondary antibody (red) in PBS at room temperature in the dark.

STORAGE

Store at 4°C short term. For long term storage, store at -20°C, avoiding freeze/thaw cycles.

NOTE

For Research Use Only. Not for diagnostic, therapeutics, prophylactic or in vivo use.