

DATASHEET

Connexin 45 Rabbit Polyclonal Antibody

CAT. NO. APA14616

KEY FEATURES

Target	Connexin 45	Source / Host	Rabbit
Reactivity	Human	Clonality	Polyclonal
Applications	WB	Conjugation	Unconjugated
Form / Buffer	Liquid in 0.42% Potassium phosphate, 0.87% Sodium chloride, pH 7.3, 30% glycerol, and 0.01% sodium azide.		Storage at -20°C

BACKGROUND

Structural component of the gap junction, a specialized intercellular structure consisting of a cluster of closely packed pairs of transmembrane channels, the connexons, that allow passage of small molecules and electrical signals between neighboring cells. Forms homotypic and heterotypic channels gated by transjunctional voltage. Involved in intercellular innate immune signaling. Mediates translocation of 2',3'-cGAMP and 2',5'-oligoadenylates (2-5A) second messengers from virus-infected cells to macrophages and uninfected neighboring cells to propagate and amplify the antiviral immune response second messengers from virus-infected cells to macrophages and uninfected neighboring cells to propagate and amplify the antiviral immune response.

APPLICATION

To ensure optimal assay performance, AREX recommends conducting reagent titration tailored to each testing system for optimal detection results.

WB	1:500 - 1:2000
----	----------------

*Results are sample-specific. Please refer to your local assay conditions and test parameters for reference.

PRODUCT OVERVIEW

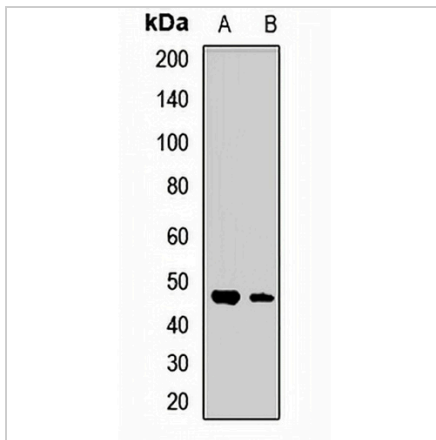
Description	Rabbit polyclonal antibody to Connexin 45
Specificity	Recognizes endogenous levels of Connexin 45 protein.
Antibody Type	Primary antibody
Immunogen	Recombinant fusion protein of human Connexin 45
Purification	The antibody was purified by immunogen affinity chromatography.
Molecular Weight	Predicted: 45 kD; Observed: 45 kD
Form/Buffer	Liquid in 0.42% Potassium phosphate, 0.87% Sodium chloride, pH 7.3, 30% glycerol, and 0.01% sodium azide.
Alternative Names	GJA7; Gap junction gamma-1 protein; Connexin-45; Cx45; Gap junction alpha-7 protein
Gene Symbol	GJC1
Entrez Gene	10052(Human); 14615(Mouse); 266706(Rat)
SwissProt	P36383(Human); P28229(Mouse); A4GG66(Rat)

*AREX continuously optimizes our products. Webpage content may not reflect the latest updates. For inquiries, please contact info@arexbio.com or your local distributor.

*Clone Number, Reactivity, Source/Host and Clonality can be found in the product name and Key Features section above.

DATASHEET**Connexin 45 Rabbit Polyclonal Antibody**

CAT. NO. APA14616

DATA

Western blot analysis of Connexin 45 expression in SW480 (A), mouse heart (B) whole cell lysates. (Predicted band size: 45 kD; Observed band size: 45 kD)

STORAGE

Store at 4°C short term. For long term storage, store at -20°C, avoiding freeze/thaw cycles.

NOTE

For Research Use Only. Not for diagnostic, therapeutics, prophylactic or in vivo use.