

DATASHEET

NTMT1 Rabbit Polyclonal Antibody

CAT. NO. APA14624

KEY FEATURES

Target	NTMT1	Source / Host	Rabbit
Reactivity	Human, Mouse, Rat	Clonality	Polyclonal
Applications	WB, IF/ICC	Conjugation	Unconjugated
Form / Buffer	Liquid in 0.42% Potassium phosphate, 0.87% Sodium chloride, pH 7.3, 30% glycerol, and 0.01% sodium azide.		Storage at -20°C

BACKGROUND

Distributive alpha-N-methyltransferase that methylates the N-terminus of target proteins containing the N-terminal motif [Ala/Gly/Pro/Ser]-Pro-Lys when the initiator Met is cleaved. Specifically catalyzes mono-, di- or tri-methylation of the exposed alpha-amino group of the Ala, Gly or Ser residue in the [Ala/Gly/Ser]-Pro-Lys motif and mono- or di-methylation of Pro in the Pro-Pro-Lys motif. Some of the substrates may be primed by NTMT2-mediated monomethylation. Catalyzes the trimethylation of the N-terminal Gly in CENPA (after removal of Met-1). Responsible for the N-terminal methylation of KLHL31, MYL2, MYL3, RB1, RCC1, RPL23A and SET. Required during mitosis for normal bipolar spindle formation and chromosome segregation via its action on RCC1.

APPLICATION

To ensure optimal assay performance, AREX recommends conducting reagent titration tailored to each testing system for optimal detection results.

WB	1:500 - 1:2000
IF/ICC	1:50 - 1:200

*Results are sample-specific. Please refer to your local assay conditions and test parameters for reference.

PRODUCT OVERVIEW

Description	Rabbit polyclonal antibody to NTMT1
Specificity	Recognizes endogenous levels of NTMT1 protein.
Antibody Type	Primary antibody
Immunogen	Recombinant fusion protein of human NTMT1
Purification	The antibody was purified by immunogen affinity chromatography.
Molecular Weight	Predicted: 15; Observed: 25 kD
Form/Buffer	Liquid in 0.42% Potassium phosphate, 0.87% Sodium chloride, pH 7.3, 30% glycerol, and 0.01% sodium azide.
Alternative Names	C9orf32; METTL11A; NRMT; NRMT1; N-terminal Xaa-Pro-Lys N-methyltransferase 1; Alpha N-terminal protein methyltransferase 1A; Methyltransferase-like protein 11A; N-terminal RCC1 methyltransferase; X-Pro-Lys N-terminal protein methyltransferase 1A; NTM1A
Gene Symbol	NTMT1
Entrez Gene	28989(Human); 66617(Mouse); 362103(Rat)
SwissProt	Q9BV86(Human); Q8R2U4(Mouse); Q5BJX0(Rat)

*AREX continuously optimizes our products. Webpage content may not reflect the latest updates. For inquiries, please contact info@arex.bio or your local distributor.

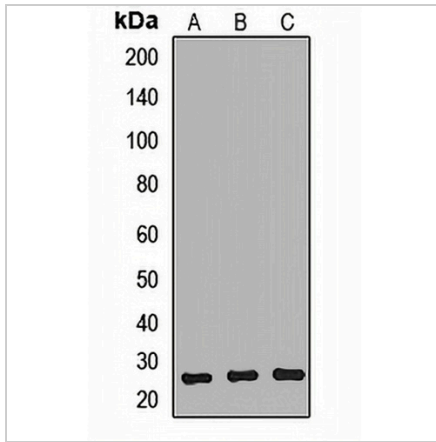
*Clone Number, Reactivity, Source/Host and Clonality can be found in the product name and Key Features section above.

DATASHEET

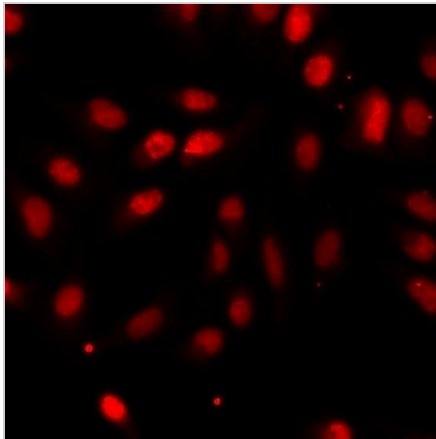
NTMT1 Rabbit Polyclonal Antibody

CAT. NO. APA14624

DATA



Western blot analysis of NTMT1 expression in MCF7 (A), SKOV3 (B), mouse testis (C) whole cell lysates. (Predicted band size: 15; 25 kD; Observed band size: 25 kD)



Immunofluorescent analysis of NTMT1 staining in A549 cells. Formalin-fixed cells were permeabilized with 0.1% Triton X-100 in TBS for 5-10 minutes and blocked with 3% BSA-PBS for 30 minutes at room temperature. Cells were probed with the primary antibody in 3% BSA-PBS and incubated overnight at 4 °C in a humidified chamber. Cells were washed with PBST and incubated with a DyLight 594-conjugated secondary antibody (red) in PBS at room temperature in the dark.

STORAGE

Store at 4°C short term. For long term storage, store at -20°C, avoiding freeze/thaw cycles.

NOTE

For Research Use Only. Not for diagnostic, therapeutics, prophylactic or in vivo use.