

DATASHEET
EAF2 Rabbit Polyclonal Antibody
CAT. NO. APA14626
KEY FEATURES

Target	EAF2	Source / Host	Rabbit
Reactivity	Human, Mouse, Rat	Clonality	Polyclonal
Applications	WB, IF/ICC	Conjugation	Unconjugated
Form / Buffer	Liquid in 0.42% Potassium phosphate, 0.87% Sodium chloride, pH 7.3, 30% glycerol, and 0.01% sodium azide.	Storage	at-20°C

BACKGROUND

Acts as a transcriptional transactivator of TCEA1 elongation activity . Acts as a transcriptional transactivator of ELL and ELL2 elongation activities. Potent inducer of apoptosis in prostatic and non-prostatic cell lines. Inhibits prostate tumor growth in vivo.

APPLICATION

To ensure optimal assay performance, AREX recommends conducting reagent titration tailored to each testing system for optimal detection results.

WB	1:500 - 1:2000
IF/ICC	1:50 - 1:200

*Results are sample-specific. Please refer to your local assay conditions and test parameters for reference.

PRODUCT OVERVIEW

Description	Rabbit polyclonal antibody to EAF2
Specificity	Recognizes endogenous levels of EAF2 protein.
Antibody Type	Primary antibody
Immunogen	Recombinant fusion protein of human EAF2
Purification	The antibody was purified by immunogen affinity chromatography.
Molecular Weight	Predicted: 14; Observed: 28 kD
Form/Buffer	Liquid in 0.42% Potassium phosphate, 0.87% Sodium chloride, pH 7.3, 30% glycerol, and 0.01% sodium azide.
Alternative Names	TRAITS; ELL-associated factor 2; Testosterone-regulated apoptosis inducer and tumor suppressor protein
Gene Symbol	EAF2
Entrez Gene	55840(Human); 106389(Mouse); 266787(Rat)
SwissProt	Q96CJ1(Human); Q91ZD6(Mouse); Q811X5(Rat)

*AREX continuously optimizes our products. Webpage content may not reflect the latest updates. For inquiries, please contact info@arexbio.com or your local distributor.

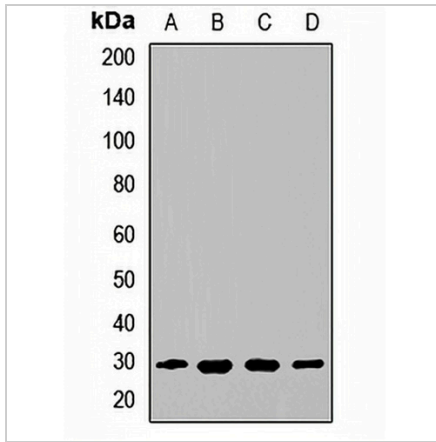
*Clone Number, Reactivity, Source/Host and Clonality can be found in the product name and Key Features section above.

DATASHEET

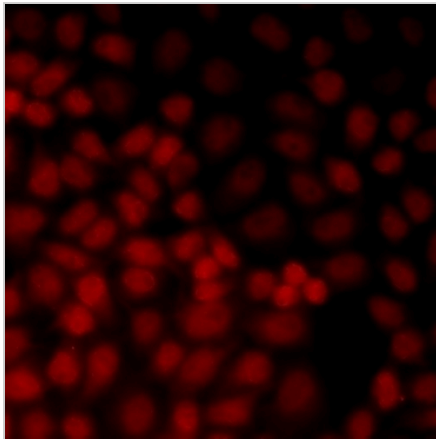
EAF2 Rabbit Polyclonal Antibody

CAT. NO. APA14626

DATA



Western blot analysis of EAF2 expression in HepG2 (A), A431 (B), mouse kidney (C), rat kidney (D) whole cell lysates. (Predicted band size: 14; 28 kD; Observed band size: 28 kD)



Immunofluorescent analysis of EAF2 staining in A549 cells. Formalin-fixed cells were permeabilized with 0.1% Triton X-100 in TBS for 5-10 minutes and blocked with 3% BSA-PBS for 30 minutes at room temperature. Cells were probed with the primary antibody in 3% BSA-PBS and incubated overnight at 4 °C in a humidified chamber. Cells were washed with PBST and incubated with a DyLight 594-conjugated secondary antibody (red) in PBS at room temperature in the dark.

STORAGE

Store at 4°C short term. For long term storage, store at -20°C, avoiding freeze/thaw cycles.

NOTE

For Research Use Only. Not for diagnostic, therapeutics, prophylactic or in vivo use.