

DATASHEET

ART5 Rabbit Polyclonal Antibody

CAT. NO. APA14630

KEY FEATURES

Target	ART5	Source / Host	Rabbit
Reactivity	Human, Mouse, Rat	Clonality	Polyclonal
Applications	WB	Conjugation	Unconjugated
Form / Buffer	Liquid in 0.42% Potassium phosphate, 0.87% Sodium chloride, pH 7.3, 30% glycerol, and 0.01% sodium azide.		Storage at -20°C

BACKGROUND

The protein encoded by this gene belongs to the ARG-specific ADP-ribosyltransferase family. Proteins in this family regulate the function of target proteins by attaching ADP-ribose to specific amino acid residues in their target proteins. The mouse homolog lacks a glycosylphosphatidylinositol-anchor signal sequence and is predicted to be a secretory enzyme. Several transcripts encoding different isoforms have been found for this gene.

APPLICATION

To ensure optimal assay performance, AREX recommends conducting reagent titration tailored to each testing system for optimal detection results.

WB	1:500 - 1:1000
----	----------------

*Results are sample-specific. Please refer to your local assay conditions and test parameters for reference.

PRODUCT OVERVIEW

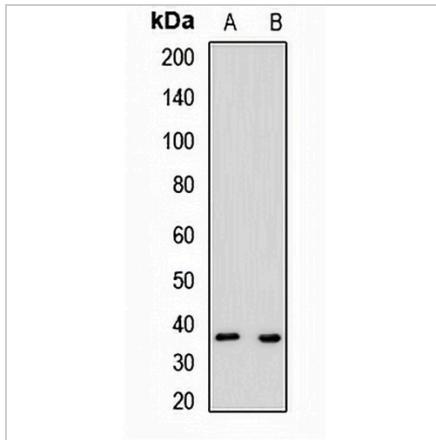
Description	Rabbit polyclonal antibody to ART5
Specificity	Recognizes endogenous levels of ART5 protein.
Antibody Type	Primary antibody
Immunogen	Recombinant fusion protein of human ART5
Purification	The antibody was purified by immunogen affinity chromatography.
Molecular Weight	Predicted: 25; Observed: 37 kD
Form/Buffer	Liquid in 0.42% Potassium phosphate, 0.87% Sodium chloride, pH 7.3, 30% glycerol, and 0.01% sodium azide.
Alternative Names	Ecto-ADP-ribosyltransferase 5; ADP-ribosyltransferase C2 and C3 toxin-like 5; ARTC5; Mono(ADP-ribosyl)transferase 5; NAD(P)(+)-arginine ADP-ribosyltransferase 5
Gene Symbol	ART5
Entrez Gene	116969(Human); 11875(Mouse); 259167(Rat)
SwissProt	Q96L15(Human); P70352(Mouse); Q5XHY4(Rat)

*AREX continuously optimizes our products. Webpage content may not reflect the latest updates. For inquiries, please contact info@arexbio.com or your local distributor.

*Clone Number, Reactivity, Source/Host and Clonality can be found in the product name and Key Features section above.

DATASHEET**ART5 Rabbit Polyclonal Antibody**

CAT. NO. APA14630

DATA

Western blot analysis of ART5 expression in mouse skeletal muscle (A), rat brain (B) whole cell lysates. (Predicted band size: 25; 32 kD; Observed band size: 37 kD)

STORAGE

Store at 4°C short term. For long term storage, store at -20°C, avoiding freeze/thaw cycles.

NOTE

For Research Use Only. Not for diagnostic, therapeutics, prophylactic or in vivo use.