

DATASHEET

PLA2G2D Rabbit Polyclonal Antibody

CAT. NO. APA14633

KEY FEATURES

Target	PLA2G2D	Source / Host	Rabbit
Reactivity	Human, Rat	Clonality	Polyclonal
Applications	WB, IF/ICC	Conjugation	Unconjugated
Form / Buffer	Liquid in 0.42% Potassium phosphate, 0.87% Sodium chloride, pH 7.3, 30% glycerol, and 0.01% sodium azide.		Storage at -20°C

BACKGROUND

Secretory calcium-dependent phospholipase A2 that primarily targets extracellular lipids, exerting anti-inflammatory and immunosuppressive functions . Hydrolyzes the ester bond of the fatty acyl group attached at sn-2 position of phospholipids (phospholipase A2 activity) with preference for phosphatidylethanolamines and phosphatidylglycerols over phosphatidylcholines . In draining lymph nodes, selectively hydrolyzes diacyl and alkenyl forms of phosphatidylethanolamines, releasing omega-3 polyunsaturated fatty acids (PUFAs) such as eicosapentaenoate and docosahexaenoate that are precursors of the anti-inflammatory lipid mediators, resolvins .

APPLICATION

To ensure optimal assay performance, AREX recommends conducting reagent titration tailored to each testing system for optimal detection results.

WB	1:500 - 1:2000
IF/ICC	1:50 - 1:200

*Results are sample-specific. Please refer to your local assay conditions and test parameters for reference.

PRODUCT OVERVIEW

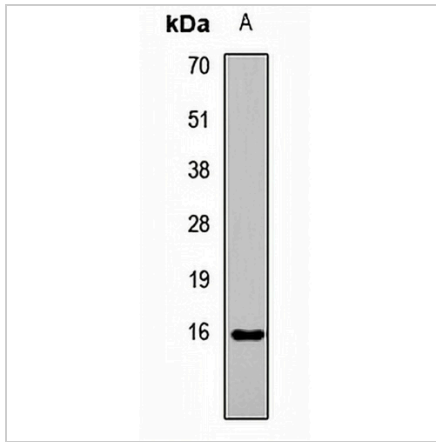
Description	Rabbit polyclonal antibody to PLA2G2D
Specificity	Recognizes endogenous levels of PLA2G2D protein.
Antibody Type	Primary antibody
Immunogen	Recombinant fusion protein of human PLA2G2D
Purification	The antibody was purified by immunogen affinity chromatography.
Molecular Weight	Predicted: 16 kD; Observed: 16 kD
Form/Buffer	Liquid in 0.42% Potassium phosphate, 0.87% Sodium chloride, pH 7.3, 30% glycerol, and 0.01% sodium azide.
Alternative Names	SPLASH; Group IID secretory phospholipase A2; GIID sPLA2; sPLA2-IIID; PLA2IID; Phosphatidylcholine 2-acylhydrolase 2D; Secretory-type PLA, stroma-associated homolog
Gene Symbol	PLA2G2D
Entrez Gene	26279(Human)
SwissProt	Q9UNK4(Human)

*AREX continuously optimizes our products. Webpage content may not reflect the latest updates. For inquiries, please contact info@arexbio.com or your local distributor.

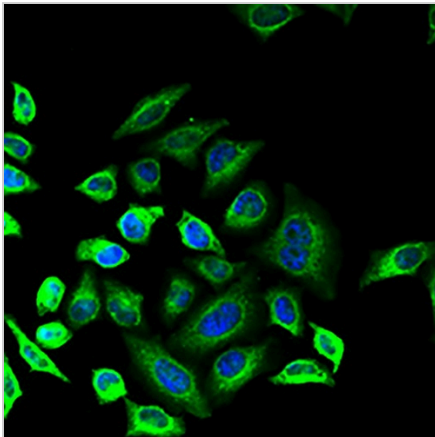
*Clone Number, Reactivity, Source/Host and Clonality can be found in the product name and Key Features section above.

DATASHEET**PLA2G2D Rabbit Polyclonal Antibody**

CAT. NO. APA14633

DATA

Western blot analysis of PLA2G2D expression in rat lung (A) whole cell lysates. (Predicted band size: 16 kD; Observed band size: 16 kD)



Immunofluorescent analysis of PLA2G2D staining in U2OS cells. Formalin-fixed cells were permeabilized with 0.1% Triton X-100 in TBS for 5-10 minutes and blocked with 3% BSA-PBS for 30 minutes at room temperature. Cells were probed with the primary antibody in 3% BSA-PBS and incubated overnight at 4 °C in a humidified chamber. Cells were washed with PBST and incubated with a AREX® Fluor 488 -conjugated secondary antibody (green) in PBS at room temperature in the dark. DAPI was used to stain the cell nuclei (blue).

STORAGE

Store at 4°C short term. For long term storage, store at -20°C, avoiding freeze/thaw cycles.

NOTE

For Research Use Only. Not for diagnostic, therapeutics, prophylactic or in vivo use.