

DATASHEET

GSTCD Rabbit Polyclonal Antibody

CAT. NO. APA14635

KEY FEATURES

Target	GSTCD	Source / Host	Rabbit
Reactivity	Human, Mouse	Clonality	Polyclonal
Applications	WB, IF/ICC	Conjugation	Unconjugated
Form / Buffer	Liquid in 0.42% Potassium phosphate, 0.87% Sodium chloride, pH 7.3, 30% glycerol, and 0.01% sodium azide.		Storage at -20°C

BACKGROUND

Glutathione S-transferase C-terminal domain-containing protein (GSTCD). Belongs to the GSTCD family Subcellular location: Cytoplasm Tissue specificity: Widely expressed in cell types relevant to airway function, including airway smooth muscle cells and epithelial cells

APPLICATION

To ensure optimal assay performance, AREX recommends conducting reagent titration tailored to each testing system for optimal detection results.

WB	1:500 - 1:2000
IF/ICC	1:50 - 1:200

*Results are sample-specific. Please refer to your local assay conditions and test parameters for reference.

PRODUCT OVERVIEW

Description	Rabbit polyclonal antibody to GSTCD
Specificity	Recognizes endogenous levels of GSTCD protein.
Antibody Type	Primary antibody
Immunogen	Recombinant fusion protein of human GSTCD
Purification	The antibody was purified by immunogen affinity chromatography.
Molecular Weight	Predicted: 61; Observed: 71 kD
Form/Buffer	Liquid in 0.42% Potassium phosphate, 0.87% Sodium chloride, pH 7.3, 30% glycerol, and 0.01% sodium azide.
Alternative Names	Glutathione S-transferase C-terminal domain-containing protein
Gene Symbol	GSTCD
Entrez Gene	79807(Human); 67553(Mouse)
SwissProt	Q8NEC7(Human); Q5RL51(Mouse)

*AREX continuously optimizes our products. Webpage content may not reflect the latest updates. For inquiries, please contact info@arexbio.com or your local distributor.

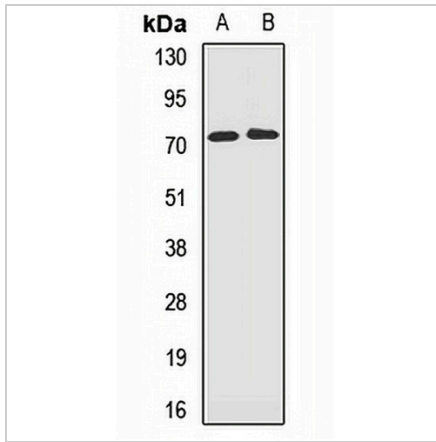
*Clone Number, Reactivity, Source/Host and Clonality can be found in the product name and Key Features section above.

DATASHEET

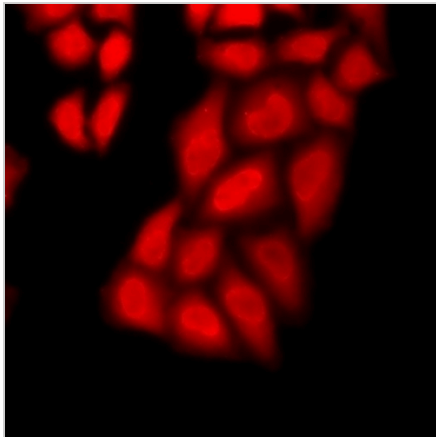
GSTCD Rabbit Polyclonal Antibody

CAT. NO. APA14635

DATA



Western blot analysis of GSTCD expression in A431 (A), HeLa (B) whole cell lysates. (Predicted band size: 61; 71 kD; Observed band size: 71 kD)



Immunofluorescent analysis of GSTCD staining in A549 cells. Formalin-fixed cells were permeabilized with 0.1% Triton X-100 in TBS for 5-10 minutes and blocked with 3% BSA-PBS for 30 minutes at room temperature. Cells were probed with the primary antibody in 3% BSA-PBS and incubated overnight at 4 °C in a humidified chamber. Cells were washed with PBST and incubated with a DyLight 594-conjugated secondary antibody (red) in PBS at room temperature in the dark.

STORAGE

Store at 4°C short term. For long term storage, store at -20°C, avoiding freeze/thaw cycles.

NOTE

For Research Use Only. Not for diagnostic, therapeutics, prophylactic or in vivo use.