

## DATASHEET

# RSRC1 Rabbit Polyclonal Antibody

CAT. NO. APA14639

### KEY FEATURES

Target	RSRC1	Source / Host	Rabbit
Reactivity	Human	Clonality	Polyclonal
Applications	WB, IHC	Conjugation	Unconjugated
Form / Buffer	Liquid in 0.42% Potassium phosphate, 0.87% Sodium chloride, pH 7.3, 30% glycerol, and 0.01% sodium azide.		Storage at -20°C

### BACKGROUND

Has a role in alternative splicing and transcription regulation . Involved in both constitutive and alternative pre-mRNA splicing. May have a role in the recognition of the 3' splice site during the second step of splicing.

### APPLICATION

To ensure optimal assay performance, AREX recommends conducting reagent titration tailored to each testing system for optimal detection results.

WB	1:500 - 1:2000
IHC	1:50 - 1:200

\*Results are sample-specific. Please refer to your local assay conditions and test parameters for reference.

### PRODUCT OVERVIEW

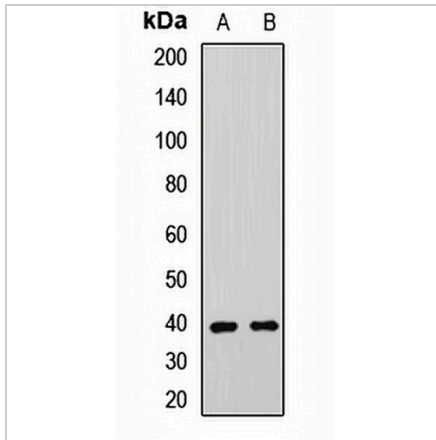
Description	Rabbit polyclonal antibody to RSRC1
Specificity	Recognizes endogenous levels of RSRC1 protein.
Antibody Type	Primary antibody
Immunogen	Recombinant fusion protein of human RSRC1
Purification	The antibody was purified by immunogen affinity chromatography.
Molecular Weight	Predicted: 31; Observed: 38 kD
Form/Buffer	Liquid in 0.42% Potassium phosphate, 0.87% Sodium chloride, pH 7.3, 30% glycerol, and 0.01% sodium azide.
Alternative Names	SRRP53; Serine/Arginine-related protein 53; SRrp53; Arginine/serine-rich coiled-coil protein 1
Gene Symbol	RSRC1
Entrez Gene	51319(Human); 66880(Mouse); 361956(Rat)
SwissProt	Q96IZ7(Human); Q9DBU6(Mouse); Q5PPJ2(Rat)

\*AREX continuously optimizes our products. Webpage content may not reflect the latest updates. For inquiries, please contact [info@arexbio.com](mailto:info@arexbio.com) or your local distributor.

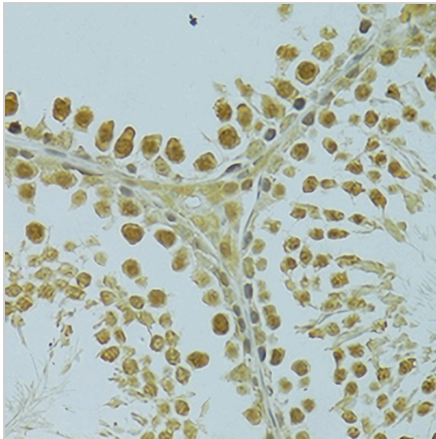
\*Clone Number, Reactivity, Source/Host and Clonality can be found in the product name and Key Features section above.

**DATASHEET****RSRC1 Rabbit Polyclonal Antibody**

CAT. NO. APA14639

**DATA**

Western blot analysis of RSRC1 expression in mouse brain (A), rat brain (B) whole cell lysates. (Predicted band size: 31; 38 kD; Observed band size: 38 kD)



Immunohistochemical analysis of RSRC1 staining in rat testis formalin fixed paraffin embedded tissue section. The section was pre-treated using heat mediated antigen retrieval with sodium citrate buffer (pH 6.0). The section was then incubated with the antibody at room temperature and detected using an HRP conjugated compact polymer system. DAB was used as the chromogen. The section was then counterstained with haematoxylin and mounted with DPX.

**STORAGE**

Store at 4°C short term. For long term storage, store at -20°C, avoiding freeze/thaw cycles.

**NOTE**

For Research Use Only. Not for diagnostic, therapeutics, prophylactic or in vivo use.