

DATASHEET

SSAT2 Rabbit Polyclonal Antibody

CAT. NO. APA14640

KEY FEATURES

Target	SSAT2	Source / Host	Rabbit
Reactivity	Human, Mouse	Clonality	Polyclonal
Applications	WB, IF/ICC	Conjugation	Unconjugated
Form / Buffer	Liquid in 0.42% Potassium phosphate, 0.87% Sodium chloride, pH 7.3, 30% glycerol, and 0.01% sodium azide.		Storage at -20°C

BACKGROUND

Catalyzes the N-acetylation of the amino acid thialysine (S-(2-aminoethyl)-L-cysteine), a L-lysine analog with the 4-methylene group substituted with a sulfur -L-cysteine), a L-lysine analog with the 4-methylene group substituted with a sulfur . May also catalyze acetylation of polyamines, such as norspermidine, spermidine or spermine . However, ability to acetylate polyamines is weak, suggesting that it does not act as a diamine acetyltransferase in vivo .

APPLICATION

To ensure optimal assay performance, AREX recommends conducting reagent titration tailored to each testing system for optimal detection results.

WB	1:500 - 1:2000
IF/ICC	1:50 - 1:200

*Results are sample-specific. Please refer to your local assay conditions and test parameters for reference.

PRODUCT OVERVIEW

Description	Rabbit polyclonal antibody to SSAT2
Specificity	Recognizes endogenous levels of SSAT2 protein.
Antibody Type	Primary antibody
Immunogen	Recombinant fusion protein of human SSAT2
Purification	The antibody was purified by immunogen affinity chromatography.
Molecular Weight	Predicted: 19 kD; Observed: 19 kD
Form/Buffer	Liquid in 0.42% Potassium phosphate, 0.87% Sodium chloride, pH 7.3, 30% glycerol, and 0.01% sodium azide.
Alternative Names	SSAT2; Diamine acetyltransferase 2; Polyamine N-acetyltransferase 2; Spermidine/spermine N(1)-acetyltransferase 2; Thialysine N-epsilon-acetyltransferase
Gene Symbol	SAT2
Entrez Gene	112483(Human)
SwissProt	Q96F10(Human)

*AREX continuously optimizes our products. Webpage content may not reflect the latest updates. For inquiries, please contact info@arexbio.com or your local distributor.

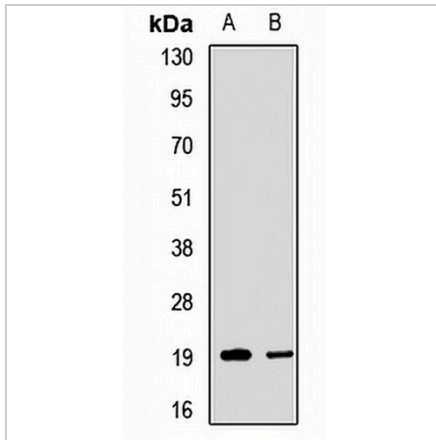
*Clone Number, Reactivity, Source/Host and Clonality can be found in the product name and Key Features section above.

DATASHEET

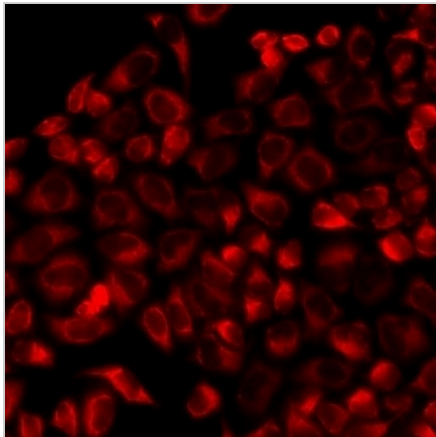
SSAT2 Rabbit Polyclonal Antibody

CAT. NO. APA14640

DATA



Western blot analysis of SSAT2 expression in mouse liver (A), mouse brain (B) whole cell lysates. (Predicted band size: 19 kD; Observed band size: 19 kD)



Immunofluorescent analysis of SSAT2 staining in MCF7 cells. Formalin-fixed cells were permeabilized with 0.1% Triton X-100 in TBS for 5-10 minutes and blocked with 3% BSA-PBS for 30 minutes at room temperature. Cells were probed with the primary antibody in 3% BSA-PBS and incubated overnight at 4 °C in a humidified chamber. Cells were washed with PBST and incubated with a DyLight 594-conjugated secondary antibody (red) in PBS at room temperature in the dark.

STORAGE

Store at 4°C short term. For long term storage, store at -20°C, avoiding freeze/thaw cycles.

NOTE

For Research Use Only. Not for diagnostic, therapeutics, prophylactic or in vivo use.