

**DATASHEET**

**TOB2 Rabbit Polyclonal Antibody**

CAT. NO. APA14642

**KEY FEATURES**

Target	TOB2	Source / Host	Rabbit
Reactivity	Human, Mouse, Rat	Clonality	Polyclonal
Applications	WB, IHC, IF/ICC	Conjugation	Unconjugated
Form / Buffer	Liquid in 0.42% Potassium phosphate, 0.87% Sodium chloride, pH 7.3, 30% glycerol, and 0.01% sodium azide.		Storage at -20°C

**BACKGROUND**

Anti-proliferative protein inhibits cell cycle progression from the G0/G1 to S phases.

**APPLICATION**

To ensure optimal assay performance, AREX recommends conducting reagent titration tailored to each testing system for optimal detection results.

WB	1:500 - 1:2000
IHC	1:50 - 1:200
IF/ICC	1:50 - 1:200

\*Results are sample-specific. Please refer to your local assay conditions and test parameters for reference.

**PRODUCT OVERVIEW**

Description	Rabbit polyclonal antibody to TOB2
Specificity	Recognizes endogenous levels of TOB2 protein.
Antibody Type	Primary antibody
Immunogen	Recombinant fusion protein of human TOB2
Purification	The antibody was purified by immunogen affinity chromatography.
Molecular Weight	Predicted: 27; Observed: 37 kD
Form/Buffer	Liquid in 0.42% Potassium phosphate, 0.87% Sodium chloride, pH 7.3, 30% glycerol, and 0.01% sodium azide.
Alternative Names	KIAA1663; TOB4; TROB2; Protein Tob2; Protein Tob4; Transducer of erbB-2 2
Gene Symbol	TOB2
Entrez Gene	10766(Human); 57259(Mouse)
SwissProt	Q14106(Human); Q9JM55(Mouse)

\*AREX continuously optimizes our products. Webpage content may not reflect the latest updates. For inquiries, please contact [info@arexbio.com](mailto:info@arexbio.com) or your local distributor.

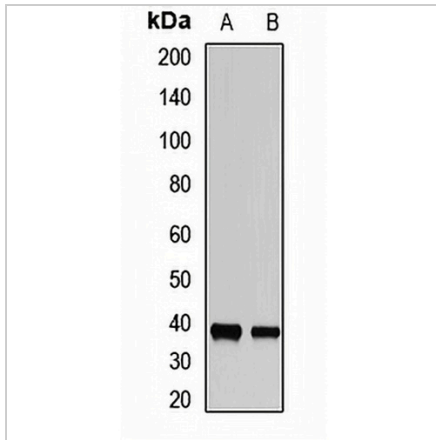
\*Clone Number, Reactivity, Source/Host and Clonality can be found in the product name and Key Features section above.

**DATASHEET**

**TOB2 Rabbit Polyclonal Antibody**

CAT. NO. APA14642

**DATA**



Western blot analysis of TOB2 expression in mouse heart (A), rat skeletal muscle (B) whole cell lysates. (Predicted band size: 27; 36 kD; Observed band size: 37 kD)

Data 2

Immunohistochemical analysis of TOB2 staining in human lung cancer formalin fixed paraffin embedded tissue section. The section was pre-treated using heat mediated antigen retrieval with sodium citrate buffer (pH 6.0). The section was then incubated with the antibody at room temperature and detected using an HRP conjugated compact polymer system. DAB was used as the chromogen. The section was then counterstained with haematoxylin and mounted with DPX.

**STORAGE**

Store at 4°C short term. For long term storage, store at -20°C, avoiding freeze/thaw cycles.

**NOTE**

For Research Use Only. Not for diagnostic, therapeutics, prophylactic or in vivo use.