

DATASHEET

ATMIN Rabbit Polyclonal Antibody

CAT. NO. APA14644

KEY FEATURES

Target	ATMIN	Source / Host	Rabbit
Reactivity	Human, Mouse, Rat	Clonality	Polyclonal
Applications	WB, IF/ICC	Conjugation	Unconjugated
Form / Buffer	Liquid in 0.42% Potassium phosphate, 0.87% Sodium chloride, pH 7.3, 30% glycerol, and 0.01% sodium azide.		Storage at-20°C

BACKGROUND

Transcription factor. Plays a crucial role in cell survival and RAD51 foci formation in response to methylating DNA damage. Involved in regulating the activity of ATM in the absence of DNA damage. May play a role in stabilizing ATM. Binds to the DYNLL1 promoter and activates its transcription.

APPLICATION

To ensure optimal assay performance, AREX recommends conducting reagent titration tailored to each testing system for optimal detection results.

WB	1:500 - 1:2000
IF/ICC	1:50 - 1:200

*Results are sample-specific. Please refer to your local assay conditions and test parameters for reference.

PRODUCT OVERVIEW

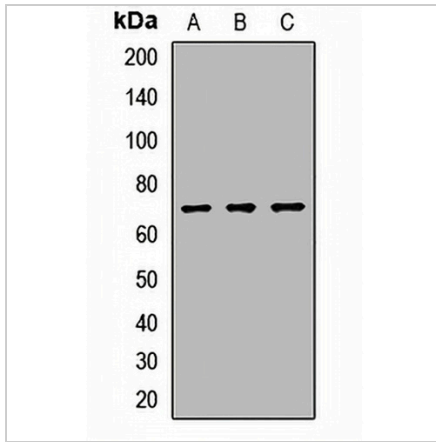
Description	Rabbit polyclonal antibody to ATMIN
Specificity	Recognizes endogenous levels of ATMIN protein.
Antibody Type	Primary antibody
Immunogen	Recombinant fusion protein of human ATMIN
Purification	The antibody was purified by immunogen affinity chromatography.
Molecular Weight	Predicted: 72; Observed: 68-88 kD
Form/Buffer	Liquid in 0.42% Potassium phosphate, 0.87% Sodium chloride, pH 7.3, 30% glycerol, and 0.01% sodium azide.
Alternative Names	KIAA0431; ZNF822; ATM interactor; ATM/ATR-substrate CHK2-interacting zinc finger protein; ASCIZ; Zinc finger protein 822
Gene Symbol	ATMIN
Entrez Gene	23300(Human); 234776(Mouse)
SwissProt	O43313(Human); Q6P9S1(Mouse)

*AREX continuously optimizes our products. Webpage content may not reflect the latest updates. For inquiries, please contact info@arexbio.com or your local distributor.

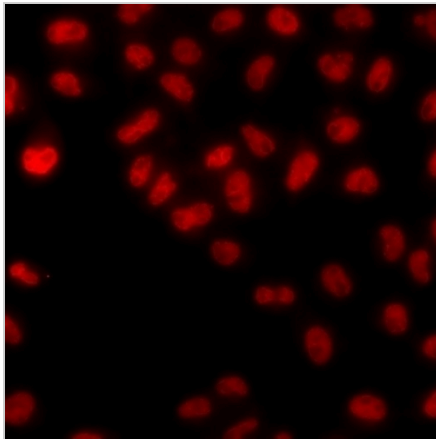
*Clone Number, Reactivity, Source/Host and Clonality can be found in the product name and Key Features section above.

DATASHEET**ATMIN Rabbit Polyclonal Antibody**

CAT. NO. APA14644

DATA

Western blot analysis of ATMIN expression in MCF7 (A), mouse testis (B), rat brain (C) whole cell lysates. (Predicted band size: 72; 88 kD; Observed band size: 68-88 kD)



Immunofluorescent analysis of ATMIN staining in MCF7 cells. Formalin-fixed cells were permeabilized with 0.1% Triton X-100 in TBS for 5-10 minutes and blocked with 3% BSA-PBS for 30 minutes at room temperature. Cells were probed with the primary antibody in 3% BSA-PBS and incubated overnight at 4 °C in a humidified chamber. Cells were washed with PBST and incubated with a DyLight 594-conjugated secondary antibody (red) in PBS at room temperature in the dark.

STORAGE

Store at 4°C short term. For long term storage, store at -20°C, avoiding freeze/thaw cycles.

NOTE

For Research Use Only. Not for diagnostic, therapeutics, prophylactic or in vivo use.