

DATASHEET

NAT10 Rabbit Polyclonal Antibody

CAT. NO. APA14645

KEY FEATURES

Target	NAT10	Source / Host	Rabbit
Reactivity	Human, Mouse, Rat	Clonality	Polyclonal
Applications	WB, IF/ICC	Conjugation	Unconjugated
Form / Buffer	Liquid in 0.42% Potassium phosphate, 0.87% Sodium chloride, pH 7.3, 30% glycerol, and 0.01% sodium azide.		Storage at -20°C

BACKGROUND

RNA cytidine acetyltransferase that catalyzes the formation of N(4)-acetylcytidine (ac4C) modification on mRNAs, 18S rRNA and tRNAs -acetylcytidine (ac4C) modification on mRNAs, 18S rRNA and tRNAs . Catalyzes ac4C modification of a broad range of mRNAs, enhancing mRNA stability and translation . mRNA ac4C modification is frequently present within wobble cytidine sites and promotes translation efficiency . Mediates the formation of ac4C at position 1842 in 18S rRNA . May also catalyze the formation of ac4C at position 1337 in 18S rRNA . Required for early nucleolar cleavages of precursor rRNA at sites A0, A1 and A2 during 18S rRNA synthesis . Catalyzes the formation of ac4C in serine and leucine tRNAs .

APPLICATION

To ensure optimal assay performance, AREX recommends conducting reagent titration tailored to each testing system for optimal detection results.

WB	1:500 - 1:2000
IF/ICC	1:50 - 1:200

*Results are sample-specific. Please refer to your local assay conditions and test parameters for reference.

PRODUCT OVERVIEW

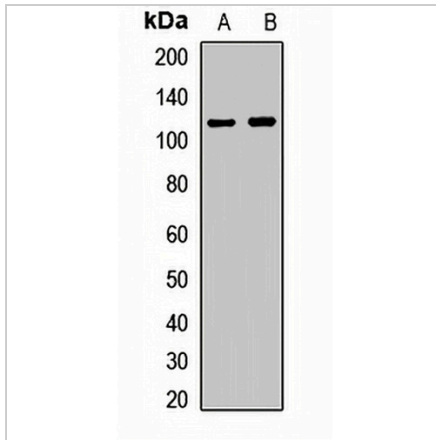
Description	Rabbit polyclonal antibody to NAT10
Specificity	Recognizes endogenous levels of NAT10 protein.
Antibody Type	Primary antibody
Immunogen	Recombinant fusion protein of human NAT10
Purification	The antibody was purified by immunogen affinity chromatography.
Molecular Weight	Predicted: 107; Observed: 116 kD
Form/Buffer	Liquid in 0.42% Potassium phosphate, 0.87% Sodium chloride, pH 7.3, 30% glycerol, and 0.01% sodium azide.
Alternative Names	ALP; KIAA1709; N-acetyltransferase 10
Gene Symbol	NAT10
Entrez Gene	55226(Human); 98956(Mouse)
SwissProt	Q9H0A0(Human); Q8K224(Mouse)

*AREX continuously optimizes our products. Webpage content may not reflect the latest updates. For inquiries, please contact info@arexbio.com or your local distributor.

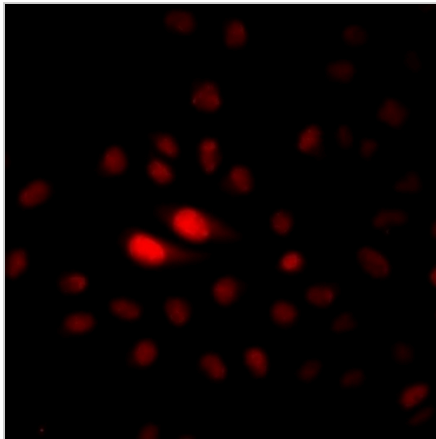
*Clone Number, Reactivity, Source/Host and Clonality can be found in the product name and Key Features section above.

DATASHEET**NAT10 Rabbit Polyclonal Antibody**

CAT. NO. APA14645

DATA

Western blot analysis of NAT10 expression in HepG2 (A), HeLa (B) whole cell lysates. (Predicted band size: 107; 115 kD; Observed band size: 116 kD)



Immunofluorescent analysis of NAT10 staining in MCF7 cells. Formalin-fixed cells were permeabilized with 0.1% Triton X-100 in TBS for 5-10 minutes and blocked with 3% BSA-PBS for 30 minutes at room temperature. Cells were probed with the primary antibody in 3% BSA-PBS and incubated overnight at 4 °C in a humidified chamber. Cells were washed with PBST and incubated with a DyLight 594-conjugated secondary antibody (red) in PBS at room temperature in the dark.

STORAGE

Store at 4°C short term. For long term storage, store at -20°C, avoiding freeze/thaw cycles.

NOTE

For Research Use Only. Not for diagnostic, therapeutics, prophylactic or in vivo use.