

**DATASHEET**

**SMYD3 Rabbit Polyclonal Antibody**

CAT. NO. APA14646

**KEY FEATURES**

Target	SMYD3	Source / Host	Rabbit
Reactivity	Human, Mouse, Rat	Clonality	Polyclonal
Applications	WB, IF/ICC	Conjugation	Unconjugated
Form / Buffer	Liquid in 0.42% Potassium phosphate, 0.87% Sodium chloride, pH 7.3, 30% glycerol, and 0.01% sodium azide.		Storage at-20°C

**BACKGROUND**

Histone methyltransferase. Specifically methylates 'Lys-4' of histone H3, inducing di- and tri-methylation, but not monomethylation . Also methylates 'Lys-5' of histone H4 . Plays an important role in transcriptional activation as a member of an RNA polymerase complex . Binds DNA containing 5'-CCCTCC-3' or 5'-GAGGGG-3' sequences .

**APPLICATION**

To ensure optimal assay performance, AREX recommends conducting reagent titration tailored to each testing system for optimal detection results.

WB	1:500 - 1:2000
IF/ICC	1:50 - 1:200

\*Results are sample-specific. Please refer to your local assay conditions and test parameters for reference.

**PRODUCT OVERVIEW**

Description	Rabbit polyclonal antibody to SMYD3
Specificity	Recognizes endogenous levels of SMYD3 protein.
Antibody Type	Primary antibody
Immunogen	Recombinant fusion protein of human SMYD3
Purification	The antibody was purified by immunogen affinity chromatography.
Molecular Weight	Predicted: 29; Observed: 49 kD
Form/Buffer	Liquid in 0.42% Potassium phosphate, 0.87% Sodium chloride, pH 7.3, 30% glycerol, and 0.01% sodium azide.
Alternative Names	ZMYND1; ZNFN3A1; Histone-lysine N-methyltransferase SMYD3; SET and MYND domain-containing protein 3; Zinc finger MYND domain-containing protein 1
Gene Symbol	SMYD3
Entrez Gene	64754(Human); 69726(Mouse)
SwissProt	Q9H7B4(Human); Q9CWR2(Mouse)

\*AREX continuously optimizes our products. Webpage content may not reflect the latest updates. For inquiries, please contact [info@arexbio.com](mailto:info@arexbio.com) or your local distributor.

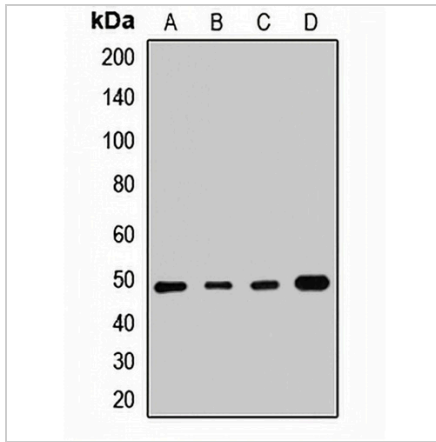
\*Clone Number, Reactivity, Source/Host and Clonality can be found in the product name and Key Features section above.

**DATASHEET**

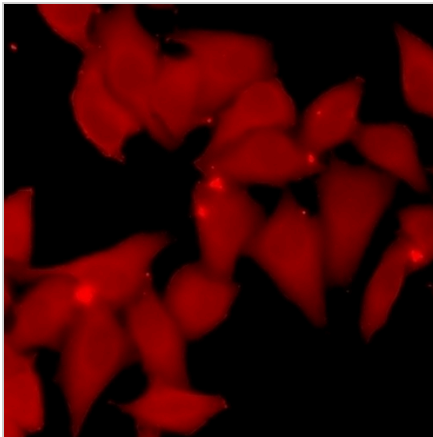
**SMYD3 Rabbit Polyclonal Antibody**

CAT. NO. APA14646

**DATA**



Western blot analysis of SMYD3 expression in Jurkat (A), MCF7 (B), HeLa (C), mouse heart (D) whole cell lysates. (Predicted band size: 29; 42; 49 kD; Observed band size: 49 kD)



Immunofluorescent analysis of SMYD3 staining in MCF7 cells. Formalin-fixed cells were permeabilized with 0.1% Triton X-100 in TBS for 5-10 minutes and blocked with 3% BSA-PBS for 30 minutes at room temperature. Cells were probed with the primary antibody in 3% BSA-PBS and incubated overnight at 4 °C in a humidified chamber. Cells were washed with PBST and incubated with a DyLight 594-conjugated secondary antibody (red) in PBS at room temperature in the dark.

**STORAGE**

Store at 4°C short term. For long term storage, store at -20°C, avoiding freeze/thaw cycles.

**NOTE**

For Research Use Only. Not for diagnostic, therapeutics, prophylactic or in vivo use.